

South Central Pennsylvania Wood Turners



President

Joel Persing

jhpersing@mac.com

(717) 683-2481

Vice-President

Tom Deneen

tomdeneen@outlook.com

(717) 927-9004

Treasurer

Barry Stump

c133c5a@comcast.net

(717) 885-0879

Secretary

Craig Zumbrun

czumbrun@gmail.com

(717) 586-7381

Newsletter

Mark Coons

kmcoons@aol.com

(717) 698-1795

Club Web Site

www.PAwoodturners.com

SCPWT is a group of wood turning enthusiasts with differing abilities, but likeminded in our attraction to spinning wood. We meet on the first Tuesday of most months of the year at 6:30 PM at The York Town Craft Guild at 639 N. Franklin St., York, PA 17403 (parking on street or in grass lot across the street).



Don Wilson demonstrates turning thin objects at our June club meeting

June 4th 2024 Meeting Notes

President Joel Persing opened the meeting at 6:30 PM. There were 17 members in attendance.

Treasurers Report: Barry Stump reported that the account balance stands at \$2,519.14. Rent through June has been paid. There's also \$70 in cash.

Business notes

Martin Stolpe referenced items he received for a Lancaster County library auction. He thinks members had contributed items made from wood that he donated to the auction. Martin said there was wood available from a sawyer, Merle Wasserman who lives at 22 Quarter Horse Lane in Lancaster. Martin is traveling to Montana and Wyoming and is not going to be available, but if people are interested they should call Merle at 717-371-6512.

Gary Vreeland brought in pen turning equipment and blanks he would like to sell for \$325.

Tom said that former club secretary, Carol Woodbury, is moving and selling things. One item is a Craftsman Lathe and all of her turning tools. She would like \$225. There's also red oak wood available.

Members were reminded to consider signing up for the mid Atlantic wood turning show September 20-22 in Lancaster.

The July meeting will feature Rich Conley on turning with resin.

Deceased member Bill Fordney had done a history of the club a few years ago. Barb Fordney, his widow, provided the documents in a binder of early projects. She is also selling her equipment.

Show and Tell

Phil Reid brought a maple Burl umeke bowl.

Tom Deneen made two beaded bowls, one chestnut and one Bradford pear.

Bryan Sword made a red maple Burl bowl with antique oil finish. Barry Stump made a stained ash bowl and a threaded box of cocobolo.

Don Wilson made two small bowls, one box elder in the other spalted maple, and a walnut finial.

The evening's program by Don Wilson on turning thin objects

Don began by stating that the secret to turning thin objects is to take the pressure off the object. He used a pinpoint live center. The wood selected was black walnut. He uses a curved Skew because it is not as aggressive as a straight edge tool. He places his hand over the center as a backup stability method. He turns at a speed of 1300 RPMs.

Don always begins the cut at the tail stock end. He uses a slicing cut not a peeling cut. He suggests picking the wood to be used with care. Choose the straightest grain possible. He uses a Nova chuck to secure workpiece at the headstock end.

At the conclusion of the meeting there was a suggestion of having a tool exchange/tool sales night for members sometime in the future. The meeting concluded at 7:45 PM.

Respectfully,
Craig Zumbrun, Secretary



Phil Reid's Maple burl Umeke



Barry Stump's Cocobolo box

June 4th 2024 Show & Tell



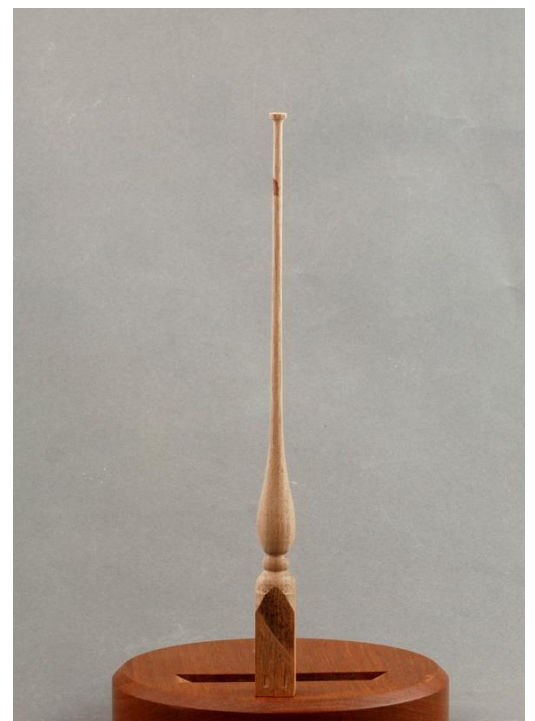
Phil Reed's Maple Burl Umeke



Bryan Sword's Red Maple Burl bowl



Tom Deneen's beaded bowls



Don Wilson's Walnut finial

June 4th 2024 Show & Tell (continued)



Barry Stump's Ash bowl (left)
and cocobolo box (above)



Don Wilson's two Spalted Box Elder bowls (below)



July 2nd 2024 Meeting Notes

16 members were present

The night's program was presented by Rich Conley. He demonstrated the use of the Resins.

Show and Tell

Tom Deneen made two small Bradford pear bowls.

Barry Stump Made to Walnut imbedded bowls.

Bryan Sword brought in a resin infused burl bowl and a

Spalted Weeping Beech bowl.

Phil Reed made a Cherry box with a Blackwood insert and a

Walnut box with a maple insert.

Craig Zumbrun made a Spalted Weeping Beech lidded box and three bird house ornaments.

Evening Program by Rich Conley on the use of resins. Rich says he uses a bowl blank to begin building a resin infused bowl with Alumilite D for product. He uses a pressure pot and starts with having the valve closed and then after filling, slowly opening the valve. Rich experiments with transparent and opaque resins and uses powdered metal as an additive or dyes with micro powders. If not using the pressure pot he has to make sure that there's no debris in the container and that it is perfectly dry. He references the color wheel that's available online to match colors to what types there those recommendations and conversion tables for volumes and we calculations of the resin toward ratios.

He cautions members not to use the D4 product below 60° so he likes to pour it in the summer. He has discovered that dyes are not always true to their presumed colors; for example greens can become yellowish and micro powder can dominate or dye quickly. He can use a product like spray vegetable oil to ease in releasing the mold. Rich discovered that he can use a file separator to aid in mold separation. Sometimes he'll employ sanding sealer to lessen air coming out of the wood. He uses products like caulk and hot melt glue to help keep the wood in place so it doesn't float to the top.

Rich prefers using polyurethane finishes on resin. He has discovered that is always best to use the same dyes and resins from the original company, not mixing brands. He's had good luck in using epoxy resin's that originate in Poland, and he's found that thinner resins require up to three days to harden, whereas thick resins will harden overnight. He cautioned that the longer the time is required for setting, the greater the possibility for more air and bubbles in the final product.

The meeting ended at 7:45 PM.

Respectfully submitted,
Craig Zumbrun, Secretary



Rich Conley shows a bowl blank in an inexpensive dollar store bowl "mold"



Rich showing the lid of his pressure pot at the July meeting

July 2nd 2024 Show & Tell



Tom Deneen's
Bradford Pear
bowls



Barry Stump's Cherry bowl with
imbedded Walnut shells



July 2nd 2024 Show & Tell (continued)



Bryan Sword's Spalted Weeping Beech bowl and resin and burl bowl



Phil Reed's Maple and Cherry boxes

July 2nd 2024 Show & Tell (continued)



Craig Zumbrun's bird house ornaments



Craig Zumbrun's very first box,
made of Spalted Weeping Beech



We're on the Web!
www.PAwoodturners.com