



# South Central PA WoodTurners

Member of the American Woodturners Association

## January - March 2016 Newsletter

### President

Dave Neuburger  
dln2@comcast.net  
(717) 891 6618

### Vice-President

Tom Deneen  
(717) 927-9004  
Tomdeneen@  
emailaccount.com

### Treasurer

John Stewart  
(717) 757-2212  
JRWS3088@aol.com

### Secretary

Carol Woodbury

### Newsletter

Bryan Sword  
(717) 225-6807  
bryansword@gmail.com

### Club Web Site

www.PAwoodturners.com



### President's Column

by Dave Neuburger

Welcome to the new year. With a productive organizational meeting at the Stewarts' in January we set up our schedule for the year. We had to cancel our February meeting due to the snow, but were able to combine it with the March meeting which went very well. We have some new demonstrators along with some of our own club members. Topics for presentation were chosen by those attending the planning meeting. In looking over the variety of subjects, I know we will have a stimulating year. In addition, we will have a workshop at the Yorktowne Guild building in York on April 9th.

Since I first became a reader I fell in love with Mark Twain. For my column this month I would like to give you some of my favorites of his quotes. While these aren't directly about woodworking, I do think they reflect on our ability to enjoy the hobby, each other's company, and life in general. So enjoy.

**I respect a man who knows how to spell a word more than one way.**

**I was gratified to be able to answer promptly, and I did. I said I didn't know.**

**Don't let school interfere with your education.**

**Education consists mainly of what we have unlearned.**

**The secret of getting ahead is getting started.**

**To succeed in life, you need two things: ignorance and confidence.**

**The fear of death follows from the fear of life. A man who lives fully is prepared to die at any time.**

**Get your facts first, then you can distort**

**Twenty years from now you will be more disappointed by the things that you didn't do than by the ones you did do. So throw off the bowlines. Sail away from the safe harbor. Catch the trade winds in your sails. Explore. Dream. Discover.**

**Better to keep your mouth shut and appear stupid than to open it and remove all doubt.**

**Never put off till tomorrow what may be done day after tomorrow just as well.**

**Age is an issue of mind over matter. If you don't mind, it doesn't matter.**

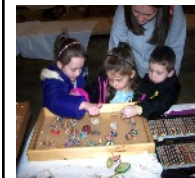
**Don't go around saying the world owes you a living. The world owes you nothing. It was here first. – Mark Twain**

Keep on turning, but get outside and enjoy spring. York county is a beautiful place to live and to witness the changing of the seasons.  
President Dave

### Cabin Fever 2016



Cabin Fever was a bit crowded this year as we had a small booth space. This allowed limited access for our treasures and made it fairly cramped to turn.



The kids still enjoyed the tops, and we had our share of compliments on our turnings. But Lancaster county residents are a lot like York's:

**DEEP POCKETS AND SHORT ARMS!**

Even the charity fund was hard pressed to get a dime.

### Dates to Note

Regular club meetings held on the first Tuesday of each month @ 6 pm @ Meeting House, Water St., Jacobus

#### April 5, 2016

Theodore Rasnussen  
Wine Stoppers

#### May 3, 2016

Bring Your Turnings to be Critiqued!  
(in a nice way)  
by

Don Wilson and Phil Reed

#### May 13 & 14, 2016

Fox Chapel  
Woodworking Show  
For info  
www.wood-show.com

## The Builders Home and Garden Show

Many thanks to our own representative **Leo Deller** who has great connections with the show. It was a great success (at least for yours truly). We had a large space to demonstrate and offer the good folks of York county our under-valued works of art that we turn out with our creative minds (limited as they may be).



We may have even been able to entice a few new members because of our local connection (or else they felt sorry for us). Or perhaps it was from the overall freedom of expression that is exhibited by our most creative minds.

Perhaps it was that we have the most gracious hostess at our charity table in the person of Joan Stewart. Although we practically give the stuff away, it does add to our education fund (that new lathe is only \$3000 away).



John Stewart presented a check from our club to the charity ForeSight VISION. Next to this booth was displayed the potting bench made by our member Leo Deller which was without a doubt the best of show!

Thousands of dollars of fine turning art was exhibited for purchase by the discerning public. Sales were random but sometimes surprising.



Our top top-maker once again mesmerized the young and beautiful with his speed and agility at producing tops.

Charlie explained the finer points of pen making to the rapt attention of Phil and Barry. (Or he could be telling a fish story of how big the fish was.)



A final highlight of the show was the balloon toy maker. Name a toy or animal and then with a few twists and squeaks and more twists, within a minute you would have it. We should have brought one back for our president.

## Minutes of Meeting 3-1-16

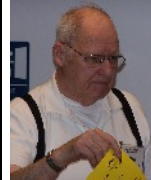
Submitted by our talented Secretary Carol Woodbury



El Presidente **Dave Neuburger** called the meeting to order.

**Guests** Joe Fitzpatrick and Robert Emig were introduced as interested guests.

**Treasurer's Report** Treasurer **John Stewart** announced that we have \$3,016 in the treasury after taking in \$443.62 at the Builder's Show. Our Education Fund accounts for \$662.13 of our funds.



**Donation Thank You's** John sent around a brochure from the Lehman Center to which we donated. He also received a thank you note from the Food Bank for our donation there.

**Black CA glue** A show of hands indicated that John should order black CA glue at \$4.25 for 1 oz. It is flexible and slower drying, therefore good for gluing glass to wood.

**Reports on recent shows** The Builder's Show went well. **John Stewart** felt that our space at Cabin Fever was not good and he questions our going back. (Although there were some who did well.)

**New Website Host** Dave's son **Mark Neuburger** will be taking over the Website and hosting it on his own server. This will save the club at least \$120/year.

**Club Demonstrators** Dave has spoken with other clubs in hopes of having reciprocal demonstrators. Don Rasmussen of the Lancaster Woodturner's Club likes the idea.

**Hands On Workshop** A Workshop was announced for April 9 from 9 am to noon at the Yorktowne Craft Guild. Our lathes will be set up there for work at all levels.

**New Woodturner's Symposium** The **Mid-Atlantic Woodturner's Symposium** will be September 24 & 25, 2016 in Lancaster. The fee is \$210 per person if paid before August. Their website is: <http://mawts.com>

**York County Beekeepers** The Beekeepers will be showing in Harrisburg and suggested that if anyone wants to provide honey pots, they will sell them for us at the Farm Show Arena, PA Association of Beekeepers.

**Raffle Winner** Bill Krofft won the raffle and received Dave N's small natural edge cherry bowl.





**March 2016 Show and Tell**



**Bill Krofft**



3 bowls maple and cherry finished with thinned shellac



**Tom Deneen**  
2 natural edge bowls. Cherry burl finished with mineral oil & beeswax



**Dave Neuburger**  
Natural edge cherry bowl



**Bill Fordney**  
cherry bowl



**Leo Deller**



Bowl  
6 woods in stacked rings

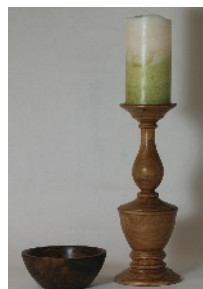
Whiskey Jug,  
oak and walnut  
400 pieces



**Barry Stump**  
Box elder vase  
finished with 4 coats of poly



**Greg Fink**  
Candle stand  
Walnut bowl  
*His First Bowl!*



**More Show and Tell**



**Don Wilson**  
Fractal decorated vase  
by Lichtenburg Art lightning technique

(This technique will be demonstrated later in the year)

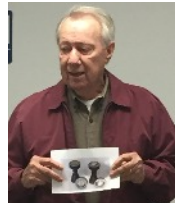


**Phil Reed**  
Bocote threaded box  
with black onyx insert in lid.

Phil Reed won the gift certificate for Show and Tell.



**Dave Hunter**  
Bottle stoppers he donated to the Navy Marine Ball to benefit their Relief Fund



**March Demonstrations**

We were blessed with TWO Demonstrators this meeting Martin Stolpe and Don Wilson



**Martin Stolpe**

Martin brought a slab of white elm from Michigan, a very heavy and hard wood with interlocking grain, to give away this evening. He discussed interlocking grain which cannot be bent.

Martin is always full of wonderful stories and an amazing amount of technical information. He answered questions from the floor and mentioned the upcoming cutting at Buchanan's Wheatland. There will be 10,000 – 15,000 board feet of logs sawn. The Historical Society will charge by the board foot and would like some of the wood to be turned and returned to the gift shop for sale.

In most cases Martin deals with historic or significant wood and requests that you let him know if you want him to find anything specific over the coming year.

**Metal detector** He ALWAYS uses a metal detector on an older tree. Why? Because you can ruin your saw or the sawmill's saw really easily if there is a nail or other metal grown over and invisible.

Continued on page 4

**Weeping Willow** Asked about turning weeping willow, Martin said it's best thrown away. It is moisture laden with a cell structure so soft and moist it almost tears itself apart. The only exception is native black willow, which was first used for artificial limbs because in weight it is closest to the weight of a human limb.



Martin really is emphasizing **NOT** to turn weeping willow.

**Ornamental wood** Questioned about using ornamental woods, he replied that the best wood would be hard and heavy. Dogwood is the hardest, then cherry, beech, white (not red) oak, ironwood, etc. what are called "muscle woods". Osage orange is also hard and interlocking; in the 1920s and 30s, it was recommended for use as a fence row. Boxwood is hard and good for turning, but to get a large enough piece, you have to go to the UK. White oak is great for bending because it doesn't have interlocking grain, so that it will stretch as it takes the bend.



To find a list of woods and their characteristics and hardness, he urges you to visit the US Dept. of Agriculture Division at the U. of Wisc., Forest Products Laboratory in Madison. Visit the museums there too. Highly recommended: "A Natural History of Trees of Eastern and Central North America", Donald Culross Peattie, 1950. To purchase woods, he suggests Groff & Groff in Gap, PA.



**Tips and Tricks**

Leo Deller showed a jig he fashioned in order to make small round balls.



**Don Wilson**



Martin's a hard act to follow, but Don managed it well. He discussed sanding and the varieties of sandpaper. He quoted

*"Sand like somebody else is paying for the sandpaper"*

Don feels Red Resin sandpaper from SUPERGRIT ABRASIVES in Gettysburg, Pa is the best. He keeps 120, 220, 320 paper and 1", 2", and 3" sanding disks on hand.

Don showed us the interface pads he uses and discussed the different manufacturers' hooks and loops for holding the paper to the disk holder. He and other members mentioned using floor buffing pad centers and kitchen scrubbies in place of commercial sandpaper. It was noted that you get what you pay for, cheap things don't last well.



Don sands by hand occasionally. 'J weight' paper is best, especially the finer grits, but you have to specifically request it. **Tom Deneen** added that he does "wet sanding" with waterproof-backed paper with oil moisturizing it. He says with junk wood, the sludge created by wet sanding fills in any tear outs. Also noted, soft woods with wide growth rings can be over-sanded with a soft fine grit and that creates ripples.

Passive Sanding was explained in detail. Don showed sanding using one-quarter of the disk at a time, starting with the NE corner and turning clockwise. You have to find the corner/quarter that works best for you. He demonstrated with his power drill, rolling for best contact and coming down around, keeping the disk turning opposite to the turning of the lathe.



Don showed a pneumatic cap from the Gweneviers System and Seycon Co. They are cone shaped for sanding inside of bowls.

As to speed, Don uses 250 if power sanding, 500 to 800 with Red Resin, 40 for control on delicate pieces, 90 with Harbor Freight's Orbital Sander.

**Thanks to Martin and Don!**