



# South Central PA WoodTurners

February - April 2015 Newsletter

## President

Dave Neuburger  
dln2@comcast.net  
(717) 891 6618

## Vice-President

Tom Deneen  
(717) 927-9004  
Tomdeneen@  
emailaccount.com

## Treasurer

John Stewart  
(717) 757-2212  
JRWS3088@aol.com

## Secretary

Carol Woodbury

## Newsletter

Bryan Sword  
(717) 225 6807  
bryansword@gmail.com

## Club Web Site

www.PAwoodturners.com

## President's Thoughts

by

Dave Neuburger



Two months after my first column, after winter has finally melted away, we were able to have our first regular club meeting of the year. Now I have something to write about, as I consider the meeting a great success.

We were able to welcome some new members and reunite all of the old ones.

Our first program featured Walt Whiteley, who has been one of York's premier fine furniture makers for decades. Walt has been my close friend for almost 15 years now, and I've learned many facets of woodworking from him by spending countless hours in his shop, working on my own furniture projects and learning from him in an informal role as apprentice and part time delivery boy.

On an early project I built myself a clothes bureau. As I ordered knobs for the project from a catalog, Walt asked me why I wasn't turning my own. It was simply because I didn't know it could be done by someone as inexperienced as I, not to mention that I had never touched a lathe. That was remedied with a lesson on turning and I was hooked. One of the great things about woodworking is how you can just continue to explore new avenues of work, new concepts that you hadn't thought possible. That continued and expanded as I bought his original small lathe after he bought an upgraded model. I experimented and found I could learn to turn small bowls, knobs and other items.

The next challenge was to make a set of six chairs for my dining room. That required twelve front legs to be turned identically, a new challenge for me. I learned the process of making a chair and got proficient enough in turning the legs that I realized how much fun turning could be and how vital it is in so much of furniture making. Hence my demand of Walt to give our first demonstration of the year. He has also now joined as a club member. Check out his website at [www.walterwhiteley.com](http://www.walterwhiteley.com)

## President's Thoughts Continued

I started thinking about how, not only is designing and making furniture a varied process that can take you in a hundred different directions, but each aspect of it can go down a hundred different roads and each of those can branch out as well. And the parallel to woodturning is obvious. When I think about how varied the interests of the club members are, I see a tremendous resource for us to continue to tap into. Pen turning, bowls, decorative arts, mushroom shaped boxes, furniture making; open your mind and continue to explore and enjoy.

## Upcoming Demos

Next month's demos will go in that direction—lessons on using the skew by Jon Amos coupled with Charlie Stuhre giving us tips on pen finishing.

## Cabin Fever

Thanks to all of the members who participated in Cabin Fever last weekend. We had filled displays, lots of visitors to our stand and lots of fun. Let Don Wilson or Tom Deneen know if you will be able to participate in the Fox Chapel demo in May.

**Final Note: I sent Walt's daughter a photo of Walt giving his talk and she responded,**

**"Look at all those young, sprightly wide-eyed students in the room!"**

Dave

## President's Honey Pot Challenge!!!



President Dave presented us with a challenge that will reap any participant a sweet reward. Dave is also a active member of the local bee keepers association. He has

arranged with those members to exchange honey for pots! Make a "honey pot" and get some honey in exchange, a fair deal for all. Dave says do not make a tight lid, (hey, that part is easy) as the lids get really sticky anyway.

The pots will be due at our July Picnic meeting.

## Dates to Note Club meeting

Tuesday May 5 2015

Social 6-6:30 PM

Meeting 6:30 til it's over  
United Methodist Church  
meeting building  
—Water St, Jacobus, PA—

## Two Demos!!

Pen finishing with CA glue  
by Charles Stuhre  
and

**"The 3 minute egg"**

**Plus using the skew chisel**  
Demo by Jon Amos

## Fox Chapel Open House

Woodworking Weekend  
May 8th and 9th, 2015  
Rough and Tumble  
Engineers Historical Ass.

## The Builders Home Show



Leo Deller arranged once again to have the club participate in the The York Builders Association Home Show. A few dedicated members demonstrated the basic skills of pen making, bowl turning and other artsy-crafty things that can be done on a lathe.

There were many interested spectators and perhaps we interested a few future turners or club members from our perseverance over the 10-11 hour days of the 3 day show.



John and Joan Stewart were there as always, John turning away on the pen demos and Joan holding down the charity table. John is always the one hauling the lathes and all the necessary equipment to

these events and is rarely thanked. **So here is a big thank you John and Joan!**

Our newly elected President Dave gave a good account of himself by turning a box. Of course, Tom Deneen cranked out bowls, mushrooms, and all sorts of high speed things.



Leo was around to critique Tom's work and shamed Bryan Sword (beleaguered newsletter editor and photo taker) into turning a mushroom box in public, a first!

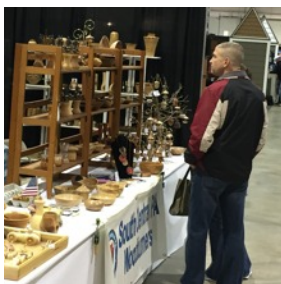
Joyce and Joan represented the better side of the club with smiling faces and better graces than the old guys.



Barry Stump pushed the broom and John cleaned up the never ending task of chip maintenance. Charlie Stuhre rounded out the crew of the dedicated few.

Our work was greatly admired (a common quote: "Boy, you guys really do beautiful work!") and we were given many

compliments on our creations, but it was a joyous occasion when the rare sale was made. As an admirer of our work said (a quilt maker who also did York County craft shows) "York County, deep pockets short arms". We who know how long it takes to create this "art" all agree whole heartily.



## Woodturners' Meeting Minutes 4-7-15

Submitted by our Honorable Secretary Carol Woodbury

(Comments in parentheses are editor's notes.)

New **President Dave Neuburger** presided this evening.

**Guests** - Four guests introduced themselves. Tom Deneen's work friend Joe; Ted Taormina's friend Steve Stankowitz, Craig Fink, retired Vocational teacher; John Henty, retired pharmacist.

### The Royal Treasury Report

as reported by the Man of Many Hats - **John Stewart**

The treasury holds \$3,897.43. (Let's buy a good lathe for demos)

**Dues are due! We were reminded to pay 2015 dues (\$30).**

### Club Shirts and Jackets

Contact John Stewart about purchasing club shirts and jackets.

### Exotic Wood Available!

Contact John Stewart for information on the wood available at the Diehl's residence. (There is more wood than you can turn in a lifetime, but a turner can never have too much wood.)



### Win one - Turn One Raffle

John had not brought along the raffle tickets, so no raffle took place and Mike Carnes' bowl will be the prize in May. (Mike's work is greatly coveted as he turns so little it is therefore very rare.)

### Announcements

The AAW Symposium will be held in Pittsburgh, June 26-28, 2015.

### County Heritage Trust Demonstration Turners Needed

**Dennis Kunkle** of the York County Heritage Trust requests volunteers to demonstrate on the old refurbished lathes for a video he's producing. Contact **Tom Deneen**.

### Fox Chapel Open House

Fox Chapel Open House is May 8 & 9, 2015. **Tom D, Charlie S, Don W. and Leo D.** will be teaching in an outside tent; we can demonstrate and sell without cost to us. See [www.wood-show.com](http://www.wood-show.com) for more information.

### PR information officer thanked!

Karen Holway was thanked for her PR efforts for the club.

### THE Presidential Honey Pot Challenge!!!!

Dave issued a President's Challenge ! He and **Walt Whiteley** belong to the Bee Keeper's Association. Thus, "The Challenge" involves both groups. Our members are to make honey bowls with loose lids, of any wood or any shape. Bowls will be exchanged with the Bee Keepers for a container of honey, which is usually collected around July 4. **Martin Stolpe** suggested that basswood or tulip poplar would be best to use because they are neutral woods and won't

*Minutes continued on pg 3 second column*



## April Demonstration Turning & Furniture Making

Presented by

**Walt Whiteley,**

*Fine Furniture Maker Extraordinaire*



An honest-to-goodness old-fashioned furniture maker, Walt brought sample templates and photographs to share with the group. Born and raised a Yorker, Walt met and married a lovely French girl and then apprenticed with a furniture-making family in France. He now lives and works on Reynolds Mill Rd in York.

Showing his unfinished templates/jigs, he explained each leg, how it fit into a finished piece, and then showed a photograph of the finished product. There were thick pedestals for tables, thinner Queen Anne legs both turned and hand carved, quarter columns for tall chests, turned then carved flame posts for beds, finials, etc.



He explained, for instance, that a Queen Anne table leg can be turned some but its padfoot has to be hand done. He showed his "rice bed", a simple desk, a chest made,



broken down in France and reassembled by friends in York for a wedding here and many more examples of his lovely work.



The demonstration was meant to answer the question: *How does turning relate to furniture making?* but expanded into much more. Walt told many stories about his original pieces, his restorations and the people who



commission him. There was much interest and many questions.

**Many thanks to Walt for sharing his elegant work with us.**

*Minutes Continued from pg. 2.*

## Professional Woodturner Demonstration

Dave also brought up the idea of a professional coming to give an all day demonstration. He has looked into 3 people: **Dave Ellsworth**, who is booked up until 2016 but who lives in PA (cost \$800 + transportation costs); **Barbara Dill**, who does off-center turning (cost \$400 +); who does high-speed turning (cost \$500 +). A show of hands indicated the most interest in a weekend event with Mike Sorge. Dave will see what date(s) Sorge can work in around his September Baltimore events.

## April Show and Tell

*Professional photos by Phil Reed*

*Candid photos by the Sword*



**Gary Vreeland**

Ambrosia maple bowl, Danish oil finish & fake natural-edge made with glued *coffee grounds*!  
Mushroom made of apple wood

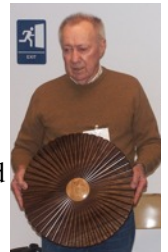


**Dave Hunter**

Walnut wall hanging (the simple one)



Walnut wall hanging with turned maple burl (the complicated one fluting done with jig and handheld router)



**Phil Reed**

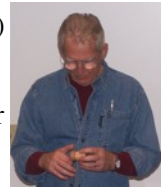
Ogee bowl and a covered bowl made of fringe tree.



(Historical fact: Fringe tree was Thomas Jefferson's favorite tree)



Plus a threaded dogwood container



*Show and tell continued on page 5*



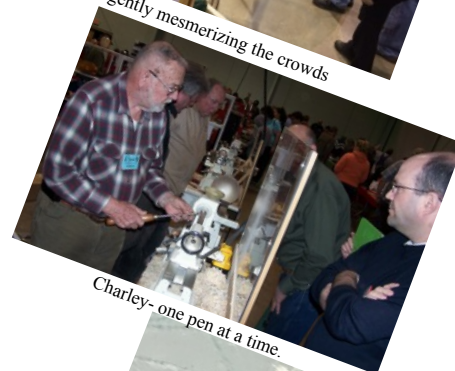
## Cabin Fever 2015



John was at his best, teaching kids to turn pens!



Don diligently mesmerizing the crowds



Charley- one pen at a time.



A true "sub" submarine!



Phil & Barry attempting the impossible.- hard selling the Amish



Joan out sold us all, giving charity a boost.



Phil is thinking, "Now is this my 459th or 460th top of the show?"



Yes, that is a parrot in the backpack.



The long and short of it, but no sale.



Bill Croft demonstrating the proper spin technique

Once again the club pulled off a fantastic display of creative and functional items at the Cabin Fever Model Engineering Expo at the York Fair Grounds. Two full days of demonstration turning and sales marked the finale to the last year the show will be held in York. It is moving to Lebanon next year.

We certainly do provide a different venue for the numerous spectators, and of course admirers, of our work. Not only does the hardy core of the club demonstrate, but they give lessons on the spot. An innovative idea for the charity portion of our demo was "make your own pen for \$20". It was a hit! Plus we had a professional top turner (Phil Reed, of course) and a professional top spinner (Bill Croft) that increased the sale of tops to new heights or "over the top" so to speak! **Nearly \$900 was raised for local charity.**



## More *Show and Tell*



### Leo Deller

Oak and walnut  
hollow form  
The medallions were  
turned and inserted  
separately.



Ash and cherry  
segmented basket  
A candle can be inserted inside.



Maple and walnut  
segmented vase



### Barry Stump

Ambrosia maple dish  
with teak oil finish



**Mark Daugherty**  
Walnut and cherry bowls



### Bryan Sword

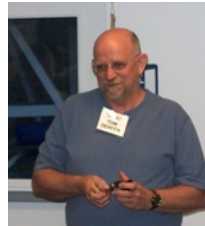
Two very natural- edge cherry bowls  
Bryan stated for the umpteenth time that this is the last time  
he is going to turn "crappy" wood.  
(But at least they didn't explode into umpteenth pieces when turning.)

## Even more *Show and Tell*



### Clark Bixler

Assorted tools, etc. made of various woods and acrylic



### Tom Deneen

2 mirrored  
compacts  
rosewood/beech



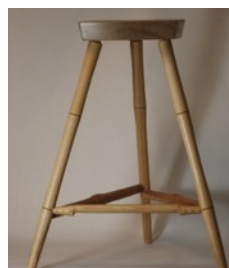
### Don Wilson

Flame yew vase



Hollow yew  
vessel  
with carved finial.

Both turnings accented with  
branding pyrography



### Bill Krofft

Ash, maple and cherry  
three legged stool



### Dave Neuburger

Mulberry honey bowl  
Box made of Martin Stolpe's spalted beech