



South Central PA WoodTurners

October/November 2013 Newsletter

President

Don Wilson
(717) 741-1226
wilson.don@verizon.net

Vice-President

Tom Deneen
(717) 927-9004
Tomdeneen@
emailaccount.com

Treasurer

John Stewart
(717) 757-2212
JRWS3088@aol.com

Secretary

Carol Woodbury

Newsletter

Bryan Sword
(717) 225 6807
bryansword@gmail.com

Final copy editor

Phyllis Sword

Club Web Site

www.PAwoodturners.com

Dates to Note

Club Meetings

Tuesday Nov 5, 12013
Social 6 - 6:30 PM
Meeting 6:30 PM

*“Turning a two piece
lamp base”*
Don Wilson

Tuesday Dec 3, 12013

Social 6



*Thoughts
from
President
Don Wilson*

My thoughts are already on the upcoming year and trying to figure out what you all would like to see for demonstrations. Please drop me an email or letter letting me know what you are interested in seeing/learning about.

The big news for me is that we will be having Jimmy Clewes on Tuesday, November 11, 2014. This has just been confirmed. I am working with the Harrisburg club to see if we can host together. They want Jimmy for an evening meeting which will be their regularly scheduled night meeting.

If they will host with us then it gives us a chance to possibly bring in another top woodturner during the 2014 season. I am looking for suggestions.

I want to thank all who participated in making ornaments for the Festival of Trees this year. It was a nice selection of ornaments.

I still do not have pen kits from Woodcraft for the “Turn for the Troops” session like we did last year. I have been busy at Woodcraft making up kits for Nov 8 and 9 at the store. We’ll see if there are kits available after that.

The craft season is in full swing at this time of the year. I hope those of you that attend the craft shows are having a successful season. It is nice to be able to support your hobby.

Happy Turning - *Don*

October 9, 2013 Minutes

Submitted by our most loyal Carol Woodbury

President Don Wilson presiding.

Treasury Report - *by John Stewart*

The Treasury was reported at \$1,946.66, plus the dues collected this evening.

Raffle Winner

Bill Fordney's maple bowl was won in the raffle by **Barry Stump**. Bill reported that there was an unexpected design change in the turning process. The bowl, for no apparent reason, flew off the lathe and performed its own durability experiment. Apparently most of the bowl survived the crash test.

Lathe and Tools Needed

New member Greer is interested in buying a lathe and tools.

Tree Ornaments

Tree ornaments are being collected. They must be turned in before Oct. 25th to Dave Hunter. This will be the last year for the Festival of Trees, as the Council of Churches is disbanding. **Update:** We have been informed that the Festival of Trees will continue even though the church council is disbanding. Proceeds from the festival go to local charities.

Farm Show Display and Volunteers

Don noted that Wayne Bender of the PA Dept. of Agriculture has sent pamphlets on invasive beetles. The club needs volunteers for the Farm Show.

Pens for Troops

Turning for the Troops is Nov 8th and 9th. Don is expecting to receive pen blanks soon.

Minutes - Continued

Craft Supplies Gift Certificates

Craft Supplies sent a nice letter along with their gift certificates. Don gave an excellent recommendation for Craft Supplies, as they do send out thousands of dollars of gift certificates per year to all the AAW clubs.

Oyster Fest Demo

Tom Deneen demonstrated at the Oyster Fest on Oct. 20th.

Club Officers' Updates

Executive Committee members were asked if they were willing to serve another term.

Don informed us that he will finish out one more year, and then a new president will have to be elected.

Liam O'Neil 2014 Demonstration

Liam O'Neil will come again to the US from Ireland in the fall of 2014. This presents an opportunity for us to have him demonstrate in York. His fees are flat fees, no travel expenses added: \$800 for a whole day or \$400 for a meeting.

South Centrals PA Woodturners Tree



Joan Stewart and Carol Hunter proudly present the SCPWT Christmas tree for the Festival of Trees. This year it has 104 ornaments and 15 or so pens. Last year's tree brought the highest dollar amount at the auction, \$450 (Still a bargain!) I was told that the festival tree committee was waiting for our arrival. Now, these gals are almost 6' tall, so you really can see how tall the tree is. John Stewart also helped in the artistic presentation of the club's craftsmanship. *Photo by John Stewart*
See John and Joan Stewart email of 10/31 for more details about the reception Nov. 7 and the show Nov. 8.

SHOW AND TELL

Photos by Phil Reed



Clark Bixler
Bowl on saucer
unknown burl

Leo Deller
Lidded bowl
Cherry and walnut



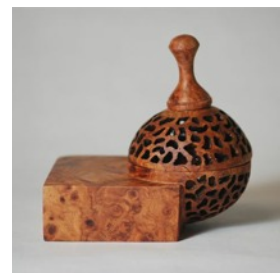
Barry Stump
Hollow ball
1/8" or 3/16" thin

Barry Stump
Square dish
Maple and mahogany



David Barkby
Wall sculpture
38" x 35"
cottonwood burl

Dean Swagert
Pierced spalted
burl box



Dean Swagert
Spalted box
unknown wood

More Show and Tell



Yarn winder
Poplar

Al Herner

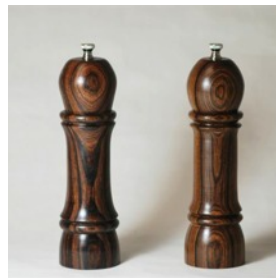


Yarn bowl
Chestnut



Barb Palastak
2 Pepper mills
Cocobolo

Bill Fordney
Maple bowl



Phil Reed
Tool handle
Padauk



Christmas Tree (side view) - Photo by John Stewart

TURNING EFFICIENCIES

October 8, 2013

Larry Miller and Bill Fordney

(Editors note: Due to operator error all pictures of this program were lost to the great unknown, before they could be transferred to the my computer.)

Bill and Larry gave an interesting program on how to speed up production when turning many of the same type of items.

Below are the notes that were handed out at the meeting.

1. Bottle Stoppers

If turning many, consider a mandrel and threaded stoppers. Be careful about mixing stoppers and mandrels from different vendors.

If not using a mandrel, consider this to speed up the process—

- If using solid wood, drill blanks using a jig.
- If using a glue-up, drill must be centered accurately
- Depth of hole should be at least 1 3/8", 3/8" for tenon, 3/8" for parting space, 1/2" for stopper tenon, plus room for glue.
- Set up drill press (centered, depth, etc.) and drill all blanks at same time.
- Turn the drilled end round — 3/4" in length. Make the first 3/8" smaller for a tenon.
- Turn all blanks this way.
- Mount the blank in #2 jaws with shoulder resting on the jaws.
- With parting tool make a cut about 5/16" long — leave about 1/16" against chuck jaws (this may protect tool from hitting jaws).
- Turn stopper to desired shape — if you want the wood to fit flush with the top of the stopper you must measure carefully. Consider leaving a small rim to seat against the stopper (this will eliminate need for careful measuring and hide any slight off-center of the hole).
- There is no need to mount the stopper on a jamb chuck to finish the top since the blank is held in the jaws.
- Apply finish and part off.

2. Pens

- Cut the blanks with excess length —(no need to be accurate) and throw away a 1/2" stub.
- Drill holes longer than tubes, but not entirely through — set drill depth and drill all holes for similar pieces.
- Cut off the undrilled end leaving a clean hole.
- Consider using a tailstock center to avoid a live center bowing the mandrel, especially if using thin inlays.
- Turn pen and apply finish.

3. Ornaments

- Turn finials and icicles first leaving a tenon on each (I use 3/8" OD). Make the ring that will be the contact between these parts and the globe slightly concave so it will fit cleanly.
- Use block of wood long enough to make several globes.
- Drill hole in block from tailstock end just deep enough for one globe plus 1/4" for parting off.
- Hollow out if desired – no need to worry about cuts because the inside will not be seen. All you are doing is removing wood to make the ornament lighter.
- Use a finished icicle to check fit on tailstock end.
- Part off the globe.
- Repeat for as many globes as you can get from the block.

4. Finishing the parted off side of the globe

- After parting off, slide the globe on a piece of threaded rod (3/8" for a 3/8" tenon) held in a chuck – use washers and nuts to hold in place. Slide a piece of 3/8" ID tubing over the rod to protect the threads from the chuck jaws.
- Make a wooden bushing with a 3/8" hole to slide over the rod. Make the OD the same diameter as rim of the finial previously turned. Use this to gauge the diameter of the flat on the globe.
- Finish the "flat" where the finial will glue in – this will allow for finishing the parted off end – sort of a reverse turning technique.

5. Protecting a finished piece

To protect the finish on a piece when placed in the chuck use Bill's tip.

- Use tubing (available at home centers for about 50¢ a foot) on the jaws of your chuck.
- Find the size to slip over pin jaws.
- Find a size to slit lengthwise and place over #2 jaws.

6. Using a Live Center to support a turning without having to make a hole in the work piece

(Based on a Phil Reed creation for supporting tops)

- If you have a live center, such as the ONEWAY live center, make several supports.
- Use a piece about 2" – 3" square. This can be larger, but not smaller than 2".
- Use nuts that are 3/4 X 10 – about 80¢ at home centers.
- Mark the center of one end of the block.
- On this end drill a hole with a 1 1/4" Forstner bit. Make the hole 9/16" deep – the nut should be 5/8" thick. When placed in the hole the nut should be 1/16" proud.
- Tighten the nut on the live center and measure how far the threaded part extends beyond the nut.
- Using the point made by the 1 1/4" bit for a center, drill a 3/4" hole deep enough to accommodate the threaded part determined above.
- Glue the nut into the hole being careful not to get glue on the threads.
- Use Epoxy or CA glue. You may want to fill in the spaces between the flats of the nut and the inner circumference of the hole with some sawdust or chips and then drizzle some CA glue in each space. This will help to bond the nut inside the hole.
- After the glue sets, thread the block with the nut onto the live center.
- With a drive spur in the headstock bring the piece up and tighten the tailstock.
- Turn the block into a cylinder. You can taper this from the tailstock down to the headstock.
- Apply a finish if desired. This is a "tool" so finish is not necessary.
- This can be used "as-is" or you can glue a piece of leather on the end.
- If using a larger block, you can round the working end so that a tennis ball with a portion cut out can slip over the end.

