



South Central PA WoodTurners

May 2012 Newsletter

President

Don Wilson
(717) 741-1226
wilson.don@verizon.net

Vice-President

Tom Deneen
(717) 927-9004
Tomdeneen@
emailaccount.com

Treasurer

John Stewart
(717) 757-2212
JRWS3088@aol.com

Secretary

Carol Woodbury

Newsletter

Bryan Sword
(717) 225 6807
bryansword@gmail.com

Club Web Site

www.PAwoodturners.com



*Thoughts
from
President
Don Wilson*

This month we will have the "burl challenge" again and I hope more people bring in their burl to show what they were able to make. There will be prizes for 1st, 2nd and 3rd place as an incentive for you to bring your burl in. I know that some of you feel that your piece isn't good enough to show. The reason for the burl challenge is that they are not the easiest thing to make something nice from. If we see what has been made and discuss what could have been done differently, it gives all of us a chance to learn and improve our turning skills. I would really like to see what became of those rough cut burls, so bring them in to the meeting.

The demo for June will be turning pendants by Barb Palastak. Pendants are small items that can be turned on just about any lathe. There are endless possibilities of designs. Barb will be working with the device that Ruth Niles sells to make the pendants. I'm looking forward to what Barb has to show us.

The demo by Beth Ireland was successful and we learned a lot. Beth is a very good teacher and never stopped talking, giving us lots of little details and tips. This is the first time that we have had a demo that utilized the bandsaw. Beth demonstrated making a box using the bandsaw and then turning and sawing on the box to make something unique. She also talked about her experiences in teaching at schools around the US and her trip to Guatemala earlier this year. After leaving us Beth was headed to Arrowmont School of Arts and Crafts in Gatlinburg, TN where she will teach classes.

I want to thank Tom Deneen for bringing his bandsaw to the meeting and letting Beth use it during her demo. Tom and Gene Jackman moved the saw up to the meeting house the night before so we would be ready for the demo. Thanks Tom and Gene.

A "thank you" also to Bill Fordney, John Stewart, John Bennett, Joyce McCormick and Phil Reed for helping with the demo.

Happy and safe turning, Don

May Meeting Minutes

President Don Wilson opened the meeting with the following announcements:

- **Martin Stolpe** has a truck full of wood free for the taking.
- York carvers has a show May 4 at United Methodist Church, 1067 E. Market St.
- **Clark Snyder**, member, is recuperating at Hershey Medical Center from receiving a mechanical heart, and will be transferred soon to rehab. Would appreciate hearing from members.
- **Bill Fordney** reviewed 2011 financial reports kept by John Stewart, treasurer, and found all in order.
- Remember Beth Ireland's all day demo May 23! Doors open at the Club House at 8 AM, demo will run 9 to 4 or 5. Lunch and breaks provided.
- A recent demo by David Ellsworth at the Harrisburg Club was attended by several members.
- **AAW News**-Cindy Bowden has recently departed from AAW. Changes still occurring
- **Cumberland Valley Club** (Chambersburg) will be hosting Mark Sfirri October 13 and hope to draw attendees from local clubs to learn from his expertise in off-center turning.
- **Malcolm Murphy**, former club member, donated tools to the club. A raffle of these items began immediately following this announcement with Don Wilson acting as Auctioneer:
 - Tool rest - \$25 from Phil Reed
 - Calipers, dividers - \$15 - Lloyd Shelleman
 - Duplicator - \$5 from Louis Jugeau
 - Calipers inside/outside - \$7 - Louis Jugeau
 - Large calipers - \$10 from Bryan Sword
 - Thickness gauges - \$10 from Bill Fordney
 - #1 Morse taper - \$1 from Mark Bortner



Raffle: Bryan Sword made a beautiful olive wood candle holder complete with candle, won by Carol Hunter.

An AAW Educational Opportunity Grant was applied for by Don Wilson, but we were turned down for this year.

The **Burl Challenge** will be extended to the June meeting to allow more to participate.

Submitted by Barbara Palastak

Thank You Barbara for subbing in as the secretary!

Dates to Note

Club Meeting

June 5 - Tuesday

6:00 PM Social

6:30 PM Meeting

**Demonstration
Pendant Turning
By our very own
Barbara Palastak**

June 5, Meeting



Last Chance!!!!!!!

The Burl Challenge
Bring your Burl!



Tom getting mentally prepared for his demo!

PEPPER MILLS Demonstration by the Ever Amazing

TOM DENEEN

Pepper Mill Kits: Tom started his presentation by explaining that pepper mills can be made from kits, and he chose one from Woodcraft Supply. Each kit comes with directions for assembly.



Kit Types: There are 2 kinds of kits available for peppermill (and salt mill) turning: one using a metal rod running the length of the mill with a grinding apparatus in the bottom, and one using a ceramic grinding device only with the pieces held together by friction. Tom chose this latter type.



Dimensions: The pepper mill should be 2 ½ to 3 inches in diameter, and the height can vary. The wood is parted into 3 sections, with tenons made so that each section can fit tightly into the next.



Precision is key! Measurements must be accurate. Forstner bits are used to drill the opening that the grinding device is snapped into; once this is inserted little jaws open and it is secured in a small groove that is turned inside the piece. Tom also uses varying sized Forstner bits to mark the exact size of the tenon to ensure a tight fit. He uses a thin parting tool, scraper, and bowl gauge for this project. The inside is finished first, then the outside can be made in the desired shape, sanded, and finished.



Tom made his own **customized tool** to help line up the area where the groove is made for the grinder to fit into.

Anyone planning to make a pepper mill should decide on the type and look at the kits available; then follow directions.

Tom, as always, gave a fact-filled and enjoyable demo.

Woodcraft Pepper Mill Ceramic Mechanism

The following is copied from Woodcraft's web site. You can go here and the instructions for this pepper mill can be copied. This paragraph concerns the crushing device:

Because these mechanisms are ceramic, they will grind salt, pepper and spices. A bottom-mounted locking grind adjustment knob eliminates the need for an adjustment knob on top of the mill, and the snap-in fitting does not require the use of metal fasteners. This lack of restrictions opens up a whole new world of design possibilities for woodturners. Complete illustrated mounting instructions are included, both have a 25-



year manufacturer's warranty. This mill is manufactured to give the greatest flexibility in mill design. With it, you can create traditional as well as upside-down mills. It has ribs that will penetrate into the wooden housing to hold the mechanism horizontally and "catchers" that hold it vertically. Placement of the turning point is flexible which gives the mechanism its unique design characteristics. Although the simplest design is 4 to 8 inches high, you can virtually build a mill as tall as you desire.

Tips & Tricks



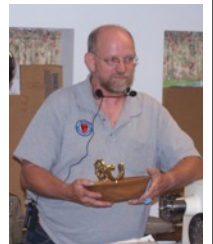
Tom Deneen showed his new toy. **Vicmarc Adjusta-Jaws.**

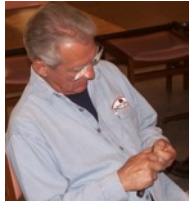
Used for light finishing to bottoms of bowls and external chucking on platters. Tom touted the grippers of the jaws as the best he has used.

Designed by Vicmarc to really hold a bowl's edge, unlike other brands that are just rubber grippers. Tom says that he has spun bowls really fast (really fast for Tom is too fast for most of us) without a problem. Also has tried to pull the bowl off by hand (with lathe turned off) and the grippers hold really tight.

Vicmarc Replacement Grippers for other brands of chucks are available from **Craft Supply (set of 8 for \$49.95)**, the great company that gives us the show & tell gift certificates.

Tom also showed us an expensive nutcracker he made. Tom did a craft show in nut country and had great success we're told. But not with the nutcrackers. **Expect Christmas gifts from Tom this year!**





SHOW AND TELL

Photos by Phil Reed



Bill Fordney
Black Walnut Vase



Walnut Salt Box



Barb Palastak
Mahogany Salt Box
with maple knob



Carol Hunter
Maple bowl
with pyrography!



Still hobbling from broken leg but at the meeting, that's dedication!



Dave Hunter
Flower from burl

Dave bent the stem by steaming giving a unique presentation to the flower



Kao bowl



Dean Swagert
Blackwood dish
made with
Rose Engine
lathe



Leo Deller
Candlestick
&
Pine burl bowl



Mulberry vase



Barry Stump
& Maple burl (blue) lidded bowl



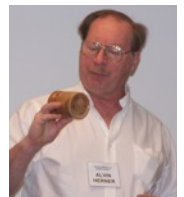
Todd White
Walnut
salad set



Cheese set
Maple & steel



Todd gave a good short talk on how to add value to a turning. For example, by adding a set of serving spoons, etc you can almost double the price on a salad bowl.



Al Herner
Maple & Sycamore cups with pyrography

Gary Vreeland
Cherry bowl



Lloyd Shelleman
Carved plate
basswood?
Made by
Harry Townsend



Tom Deneen
Elm
Nutcracker



Beth Ireland Demo Turning outside the Box

We had a good mid-week turn out for a very informative presentation by Beth Ireland. Beth first gave a slide show showing her extensive and

varied background from carpenter, production turner, designer, sculptor and woodturner. Beth's presentation was entertaining, humorous and very informative.

Artistic Epoxy Rim s for Bowls

She first explained how she made epoxy rims to bowls or other turnings. She demonstrated how she suspended objects from stained glass, golf tees, seeds to dried flowers in the epoxy. She uses West Marine epoxy for her moldings. Too much to describe here folks.

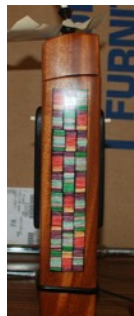
(But very impressive and the next club challenge!)
See her portfolio at: <http://bethireland.net> .

Bandsaw Box

The next part of the demo was on using the bandsaw to layout unique inlays or designs that then can be turned on the lathe as bowls, platters, wall hangings and boxes.



Tools: She uses a 1/4" 4 TPI hook blade on the saw. On the glue-ups uses only Tite Bond II glue. For turning only long thin beveled spindle gouges.



Beth demonstrated her method of making bandsaw and hand carvings for the top decorations of the box



plus how to keep the top of the box lined up with the bottom. She also showed her use of colored veneers to add artistic effect to the work.



It was a great demo and well worth the cost.



Beth Ireland Web Sites

The following paragraphs are from 2 web sites that best describe Beth Ireland her work and background.

Beth Ireland has been the owner of Beth Ireland Woodworking since 1983, specializing in architectural and artistic woodturning. She has taught workshops nationwide with venues including Massachusetts College of Art, The Center For Furniture Craftmanship, Anderson Ranch, Arrowmont, Peters Valley Craft Center, The Brookfield Center, and The Connecticut School of Woodworking. She has produced her own video, Turning Outside the Box, and was a guest star in two episodes of Cultivating Life, originally produced for PBS.

www.bethireland.net

BETH IRELAND is a sculptor who draws upon a lifetime of traditional woodworking skills. She explores sculpture, architecture and relational aesthetics. Her belief in the power of the object drives her work, exploring the idea of memory locked in objects, and the creation of object as a visible symbol of memory. Working alone and collaboratively she delves into the anthropological meaning of making in our modern lives.

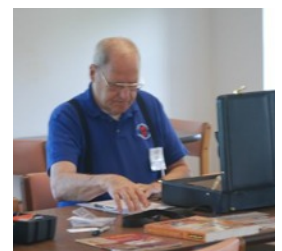
Also see her www.turningaroundamerica.com web site.

Phil Reed's Club Snap Shots

Phil was busy with his camera and insisted that if the newsletter needed some filler shots to include these. So at his insistence here they are. Phil wanted to say some witty things about "who's a head" or "cue ball in the side pocket", but I only have to say that **perfect heads do not need hair!**




The ladies of the church provided a great lunch!



The following is a table comparing Scotch-Brite pads to steel wool provided by President Don

3M Scotch-Brite™ Hand Pads

Number	Color	Abrasive	Grit Equiv.	Steel Wool Equiv.	Description	
7445 Light Duty Cleansing	White	Flint, super fine grade	1200-1500		Excellent for fine finishes, light cleaning. One of the least aggressive hand pads.	Less Aggressive
7448 Ultra Fine	Light Gray	Silicon Carbide, ultra fine grade	800-1000	#0000	Finest silicon carbide hand pad available. Excellent for final finishing and light cleaning.	Finer Finish
6448 Light Duty	Dark Gray	Silicon Carbide, ultra fine grade			Designed to clean, finish and buff.	
7447 General Purpose	Maroon	Aluminum Oxide, very fine grade	360-400	#00 - #000	Excellent starting point to clean, finish, grain, denib or defuzz.	
8447 Production	Maroon	Aluminum Oxide, very fine grade	360-400	#00 - #000	Provides most uniform finish. Excellent for use to clean, finish, grain, denib and defuzz.	
6444 Extra Duty	Brown	Aluminum Oxide, fine grade			Excellent for conformability in cleaning, finishing and graining. Also may be used to denib or defuzz.	
7446 Blending	Gray	Silicon Carbide, medium grade	120-150	#1 - #2	Excellent to grain, clean, denib, defuzz and finish. Resistant to loading.	
7440 Heavy Duty	Tan	Aluminum Oxide, medium grade			The most aggressive and durable web. Excellent for heavy cleaning, deburring, and finishing.	More Aggressive
5440 Ultra Heavy Duty	Brown	Aluminum Oxide, coarse grade			Resistant to loading. Does not contaminate. Excellent for cleaning scale or corrosion.	Coarser Finish



Abrasive		Finish (micro-inch)			
Material	Grade	Aluminum	Stainless Steel	Grit Equiv.	Steel Wool Equiv.
Silicon Carbide	Super Fine	8-12	4-6	320-600	#00 - #000
Aluminum Oxide	Very Fine	16-35	6-12	220-320	#0
Aluminum Oxide	Medium	80-100	32-40	150-180	#1 or #2
Aluminum Oxide	Coarse	130-150	62-72	80-150	

1 micro-inch = 0.000001 inc

Scotch-Brite™ Pads For Woodworking

Steel Wool Grade	Grit Grade
#0	320
#00	360
#000	500
#0000	800

Product	Color	Grit Equivalent	Steel Wool Equivalent
S-ULF	Gray	1200	
S-SFN	Gray	500-800	#0000
S-VFN	Gray	500	#000
A-VFN	Blue/Purple	360-500	#00 - #000
A-FIN		280-320	#0
S-MED	Gray	120-150	#0 - #00
A-MED	Maroon	150-180	#1 or #2
A-CRS	Brown	120	