



South Central PA WoodTurners

June 2012

President

Don Wilson
(717) 741-1226
wilson.don@verizon.net

Vice-President

Tom Deneen
(717) 927-9004
Tomdeneen@
emailaccount.com

Treasurer

John Stewart
(717) 757-2212
JRWS3088@aol.com

Secretary

Carol Woodbury

Newsletter

Bryan Sword
(717) 225 6807
bryansword@gmail.com

Club Web Site

www.PAwoodturners.com

Dates to Note

Club Meeting

July 10 - Tuesday

6:00 PM Social

6:30 PM Meeting

Demonstration

Indexing on the Lathe



*Thoughts
from
President
Don Wilson*

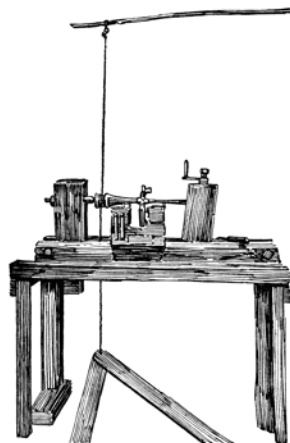
Thoughts from the President

Summer time, and it sure feels like it with the heat that we have been having. I remember the days I did my turning in the garage and didn't do much in the middle of summer or winter due to the temperature. I was in Texas in June and we only had one day when it was 103 degrees while we were there. It is also vacation time and that takes away from our turning time also.

We are going to be trimming just one tree this year for the Festival of Trees. Let's see what we can come up with making regular Christmas ornaments using inside-out turning and more conventional ornaments this year. If you want to use the sea urchins we'll have to talk about it because it takes a large order to get them at good prices.

Stay cool and safe. Happy turning.

Don



Pole Lathe

June 5, 2012 meeting

Minutes by Carol Woodbury

Meeting called to order by President Don Wilson.

Visitor **Joe Cseripko** was welcomed.

Beth Ireland Clinic

Don reported that 31 people attended Beth Ireland's interesting all day demo full of great tips.

Total costs of the day were \$1,045. Income was \$930 for a slight loss of \$115, which the treasury was able to cover.

Treasury report

John Stewart reported that presently there is \$1,932 in the treasury.

Alan Carter's workshops

Brochures were passed around for our consideration: Alan Carter's workshops and demonstrations and a Woodturning Symposium offered in VA, Sept. 15-16, 2012. There's a new order of CA glue for sale.

Wood available

Al Herner has more linden wood and Dennis Heller is cutting down 2 maples.

Clark Snyder Tom Deneen mentioned that member Clark Snyder is now in a nursing home in Mechanicsburg recovering from dual heart attacks. Clark is appreciative of cards sent by members.

Clark S. Snyder

Life Care Hospital of Mechanicsburg,
4950 Wilson Lane
Mechanicsburg, Pa. 17055

Upcoming Demonstrations

The calendar is set for the year:

July: Don-indexing on the lathe

Aug: Picnic at Stewarts'

Sept: Carving

Oct: Turning thin and piercing

Nov: Don-rectangular bowl

Dec: Christmas party

Burl Challenge

The Burl Challenge was judged by Tom and Phil.

Craft Supplies gift certificates were awarded as follows:



1st prize
Jon Amos
Large maple Fritos bowl.



2nd prize
Gary Vreeland
Natural edge Cherry bowl



3rd prize
Leo Deller
Small walnut lidded bowl

Congratulations to all who participated in this challenge!

Monthly Raffle

Carol Hunter's bowl with pyrography vines was won in the monthly raffle by Dave Neuberger.



Raffle Winner

Tom Deneen (yet again) won the show and tell raffle.

Tips and Tricks: Bryan Sword told how to save money by purchasing a Lancelot 22-tooth sculpting wood chainsaw type blade for angle grinders for considerably less from Harbor Freight. Many alarmed voices told about how some user on World of Wood Turners cut his face/neck? with such a blade. It was revealed later that this carver was using only one hand on the tool and not using the side handle of the side grinder for extra control. Well as Forest Gump's Mama said
"Stupid is as stupid does."



Tips and Tricks cont.:

Plus Bryan showed how to cut 6 -3" velcro extension power sanding pads from a 9" interface pad. The 3" pads sell for around \$3/each but the 9" pad sells for \$9, so you can save a bit. These pads are available from Super Grit in Gettysburg.

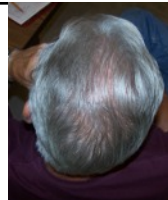
Charlie Stuhre showed a pin vise which comes in various sizes with shafts that can be fit into a chuck to drill tiny holes, eg. for beads; he hand feeds it and so is able to back it out to clear chips.



Jean-Louis Jugjeau showed a jig that when mounted on the lathe allows the user to cut constant radius curves as in making spheres.

SHOW AND TELL

Photos by Phil Reed



Phil's Head Shot



Dean Swagert

Pierced Compote with Maple lid



He penciled in the pattern of a flame design then placed a frisket film over the design and cut it out with an Exacto knife. He then used black acrylic dabbed on to create and even finish. His piercing tool bit was a dental hand piece held at right angles to the piece and used at 400,000 rpm.



Carol Hunter

Pyrographed Cherry bowl

Maple plate



Dave Hunter

Footed bowl
Japanese cherry





Al Herner - 2 natural edge bowls Linden



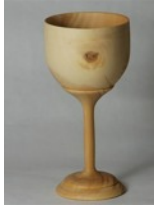
Keith Holt Head

Keith first shaped the form in clay, cast it in resin, then put onto lathe replicator.

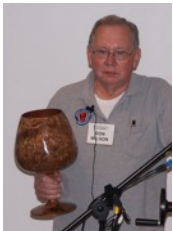
Trick: Spray a light finish coat when almost done to see where he missed sanding.



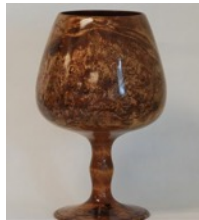
Barb Palastak
Goblet
Wheatland ginko



Bill Fordney
Corkbark Elm
platter



Don Wilson
Huge brandy snifter
Red Maple



Experimentally finished to show off the burl



Chinese fur large
natural edge bowl

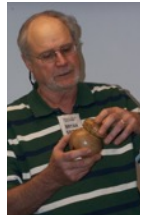


Egg kaleidoscope
California Olive
Turned on a pen mandrel

Bryan Sword
2 Cored mulberry burl
natural edge bowls.
Demonstrating what Beth
Ireland called
“negative space”



Urn
Made for Bryan's
favorite cat “Elsie”
California Olive



Used PVC pipe threads to make it a threaded urn.



Tom Deneen
Spalted Maple
bowl



Tom also made a very thin maple (?) cup. So thin that when he shined a light into the cup glowed. Tom said that his grandchildren were very impressed. But when his wife Betty saw it she asked if he had made it so thin on purpose?



Barry Stump
Cherry Vessel



Bill Gilbert
Bowl
Burl challenge



Tom Zayatz
Bowl
Red oak burl

Barb and the Bottle-stopper Mandrel



Showing off the pendant she was wearing and several she brought with her, Barb demonstrated how to produce jewelry on the mandrel that Ruth Niles sells. (this \$75 Eccentric Chuck can be seen at www.nilesbottlestoppers.com)

The best wood to use is hard, like maple, or the mahogany that Barb prefers. Although she's seen some with designs done on only the front, she suggests doing two sides, each with a different design, for double use. On her own example Barb had utilized a thin leather cord as the "chain" for wearing it.



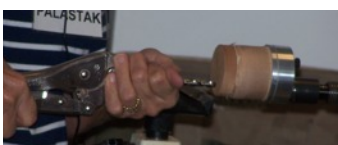
The mandrel itself has many options. It can be used centered or set eccentrically via the eight numbered holes at the back to create curving cuts. Further, the indexing wheel is numbered so you can mix or match numbers for many different effects.

Beginning by using good Craft Supply tape, Barb stuck her blank to the wood stock.



Pressure is applied with a tail stock block. Don made the block so the blank would not slip while being turned.

At this point Barb sands to smooth it.



•Setting mandrel at #8 hole, she makes the hole for the chain

- Using a detail gouge, she begins the center hole, rocking it a little.



•With 5/16th drill bit held by pliers, the hole is finished.

•With 1/4" skew, still at #8, touch lightly to make symmetrical lines.

- Use real sandpaper pads to level it.

Hints:

When incising, try to keep the 1st side flat so that when you reverse it, the tape will stick to the block

Make the same or different line design on the reverse side

Acetone removes tape residue

Keep a log of which holes you have used and what design is produced by each one

Sand and finish with Tripoli cream and wax

You could also paint or dye the surface prior to turning and cut the design through the color to the wood.



Don added that to keep the mandrel tight for safety when doing wobbly eccentric work, you can use a 1/4" draw bar.

Barb made it look fun and easy. It's always great to find new ways to use a lathe.

Thank you, Barb, for another good idea !

