



South Central PA WoodTurners

Newsletter

May 2011

President

Don Wilson
(717) 741-1226
wilson.don@verizon.net

Vice-President

Tom Deneen
(717) 927-9004
Tomdeneen
@emailaccount.com

Treasurer

John Stewart
(717) 757-2212
JRWS3088@aol.com

Secretary

Carol Woodbury
(717) 854-1749
carol.ivue@comcast.net

Newsletter

Bryan Sword
(717) 225 6807
bryansword@gmail.com



Thoughts from the President

Don Wilson

Hands-ON Turning Session!!!

The first thought is to tell you about a Saturday morning Hands-On session that is scheduled for Saturday May 14th. We will start at 8:00 AM and go to noon. This will be a session for you to bring in some project that you may be having problems with to see what the best solution will be to complete it, a chance to try a different tool, an opportunity to get your tools sharpened or reshaped to a more efficient grind. We will have multiple lathes and grinders set up for you to use. It is also a chance to see how other members turn wood up close. I enjoy working with other wood turners and having a chance to discuss the why and how of turning in an informal setting. There is always a new way to do something.

The Anchor Seal is almost gone. We have one gallon and almost two quarts left. There is still CA glue, accelerator and debonder for sale in small quantity.

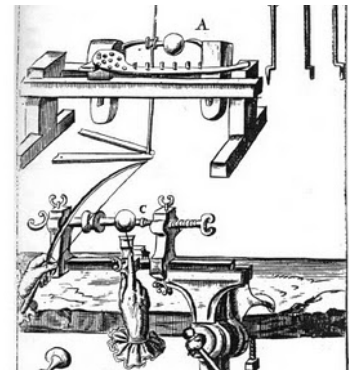
I ordered the sea urchins and they are in. I will foam the insides to help make them less fragile. I will definitely have them for the June meeting and may have them ready for the May meeting. There are 289 of different sizes and coloring so bring some extra money to the meetings if you would like to purchase sea urchins. We will have a demo on making Christmas ornaments using the sea urchins along

with other Christmas ornaments at the June meeting.

News Flash – The club web page is up and you can see it at www.PAwoodturners.com The “calendar” has the current list of demonstrations for the coming months. Follow the “links” to find a host of information on other web pages. We are still working on the web page and there will be future enhancements to what we have. If you find something that doesn’t work, please let me know the details and what page it is on so we can get it fixed. We’ll update you with the changes in the future. The “members” section is still a work-in-progress and this will be a secure area where we will have member only information.

The May meeting will be on making your own tools with purchased gouge steel. This is a great way to save money and get the tool you want.

Happy turning,
Don



Dates to Note

May 14
Jacobus Meeting House

Hands-On Turning
Session

June 7
Jacobus Meeting House

Turning Demo

Sea Urchin and other
Christmas Ornaments



**Meeting Minutes April 5, 2011
Submitted by Carol Woodbury
Secretary**



Jacket/smock orders are still being taken. Don modeled his XL, showing how it closes around the neck and won't let wood chips fly in. John passed around an L size. The AAW jackets at \$40 have their logo on; ours would have the York club logo if desired for \$39.50. 2 of Elmer's grey shirts are available for sale.

President Don Wilson called the meeting to order. Don introduced guests Maureen Homar, Ron Bower, Bonnie Debold and Bud Barney.

Treasurer's Report: John Stewart reported \$2,257 in the Treasury. Money was spent to purchase CA Glue and Anchor Seal; some reimbursements are coming in tonight. Don did not compound confusion by ordering Christmas ornament sea urchins yet.

Discussions :

a.) **CA Glue** is probably the most common glue used by woodturners. It sets very fast with the use of an accelerator. It can be used for repairing, filling cracks, reinforcing bark, hiding mistakes, etc. in woodturning. It has a shelf life of several weeks even when left opened. Unopened bottles store for months when placed in a cool environment such as a refrigerator.

Warning: Do not store it within 4' of the accelerator bottle or the fumes will set it up.

Warning: Do not stand directly over glue when using it or the fumes will burn your eyes! Also do not stand in front of a recently glued piece mounted on lathe and turn lathe on. There is always some uncured residue that will spray onto your face and/or glasses leaving irremovable spots of glue on your spectacles.

b.) **Anchor Seal** is a wax sealant that helps prevent freshly cut wood from cracking thus saving it for later turning. It sells for about \$24/gal commercially plus tax. The club purchased it in enough bulk to sell it to members for \$14/gal.

Club Raffle: The raffle was won by Dennis Heller. Don Titus nicely brought 3 turned pieces for Dennis to choose from.

Graeme Priddle

Sponsored by the Susquehanna Woodturners Club

Don mentioned Graeme Priddle's credentials and style of turning. His work reflects the New Zealand sea and Maori designs. He also does branding which is where Don first saw it done. He will be in Lancaster on May 7th for a demonstration which our members are invited to attend.

Totally Turning, March 26-27, 2011. 7 members attended at Saratoga Springs, NY. There were 5 classrooms and a plethora of well-known turners demonstrating.

WOOD, WOOD and more Wood!

Wood is available from Felix Sylvius & Bob Gochenaur (for sale) and from Martin Stolpe and John Stewart (Japanese cherry)(for free), Dennis Heller brought a truck load of box elder to the meeting to give away.

Plus just in! Felix Sylvius will be the Wheaton Hist Soc parking lot cutting up trees on Friday May 6th and most of next week, weather permitting. There are trees of exotic wood and a number of different species available if you are interested. Call him in the evening at 717-393-2184 to make arrangements

Future programs:

May – Assemble turning tools with purchased gouges.

June – Christmas ornaments using sea urchins and other styles of Christmas ornaments.

July – Multi-axis turning with Keith Holt

August – picnic at Stewart's

September – Finishes

October – Reverse hollow-form turning

November – to be determined

December – Christmas party at Stewart's

Hands-ON Turning Session!!!

Don asked about interest in a Saturday hands-on session when members could come, use grinders & lathes, and work with/under some of our more advanced turners. Positive response from many of us caused him to say he will check with the church ladies to set a date. **Note: This has been scheduled for the morning of Saturday, May 14th.**

Tips and Tricks:



Charlie Struhe showed a pen blank mounter which he can clamp to his table. John Stewart mentioned using a coat hanger to check if a drill press table is true Bend the wire in with a left and then a right 90 degree angle and put one end in the drill chuck.



Jon Amos
carved bowl
Sassafras



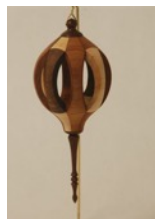
Barry Stump
Translucent flat bowl
Lace Bark Pine



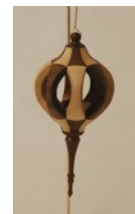
Show and Tell:



Mike Brecht
large platter
Spalted Sycamore

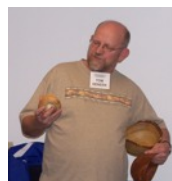


Christmas ornaments
3 woods



Barb Palastak
2 Pecan bowls
One end-grain

One side-grain



Gary Vreeland
3 bowls
White Cedar,
Kentucky Coffee
Maple



Tom Deneen

Small bowl made with new cheap texturing tool
Natural edge Sassafras bowl
Yellow Birch Bowl from Martin's wood collection

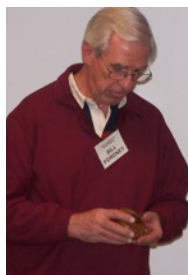
(The maple was turned green and left too long in the chuck which presented a challenge to return to round)



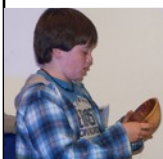
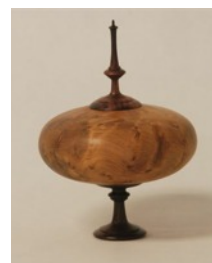
Tom Frey
Tool handle
using P & N steel



Cedar bowl



Bill Fordney
Thuya burl and
Katalox hollow-form
(He insists that the interior is beautifully smooth, but he glued it shut...highly suspect !)



Maple bowl



Tom Hagarman
Sycamore vase
green wood



Clark Snyder
small bowl
Martin's oak



Photo Credits

Show and tell pictures are kindly taken by **Phil Reed**.
Candid photos by **Bryan Sword**, newsletter editor.

Pyrography and Branding

Presented by our very own **Don Wilson**



Don Wilson demonstrated the many techniques available with the use of pyrography and branding tools. His useful handout listed sources for books, patterns, tool purchase, and different methods of burning .

Recommendations:

Fox Chapel Publishing for books by Lora Irish and a magazine on Pyrography. Machines for pyrography are available for between \$130 and \$165 and there are up to 40 tips available. The RCA jack that is on will take lots of pens. Optima will replace damaged pens.

Don demonstrated with the 3 tips he uses almost exclusively for pyrography. He suggests pyropaper for your patterns for several reasons: it doesn't flame easily, you can either burn through along the pattern lines or transfer the pattern onto the wood, you can copy designs onto it using a scanner/printer/copier, or you can use the elementary school method of penciling the back and tracing the pattern or dampen it with ammonia to transfer the pattern. He does suggest that whatever you do, you begin working in the center and work outward to keep your paper whole.

Many members related to Don's memories of wood burning as a child. He says this is way different because, with a professional grade tool, it's possible to control the heat and that allows an easier, more even hand. The better tool also cools down instantly.

Don's pens:

1. A small ball tip for writing and curved lines, since you can move it in any direction.
2. A bent skew for straight or curved lines and fine marks. This one works best between the 3 ½ and 5 ½ heat level and also can do shading.
3. There are also spoon shaped tips for shading
4. Calligraphy tips, among others.

Several techniques were demonstrated and the pieces passed around, along with a book of patterns. A

question was raised as to how to get evenly spaced designs around a circular surface. Don suggests using a lathe to index the surface by locking the spindle at specific locations and putting the tool rest at a center line so he can pencil right across the tool rest. He then changes it to each location to create guides.

Don also showed Branding, using a battery charger and mouse looking thing a la Graeme Priddle. He sets the branding iron down, burns, moves to next spot. He works with interchangeable wire "irons" – spiral, rickrack, basket weave, etc. of nicrom wire – from a Molly Winton wire pack bought on ebay

Miscellaneous tips :

1. Do not stipple a background in rows.
2. Use Krylon satin or archival spray as a finish.
3. Acrylic pencils set with spray or a gesso base work well for coloring.
4. Black gesso applied with a short bristle brush can then be scrubbed with a dry brush to define a design.
5. Do not use oil colors because they catch in the grain and smear.
6. You can add definition by cutting a groove and putting a colored pencil line in it. He also rubs white molding paste over the piece and wipes it off so that the white remains within the lines of the design.

Sources

- Fox Chapel Publishing – do a search on Pyrography
- Pyrography Online
 - Great Book of Woodburning by Lora Irish
 - Pyrography Workbook by Sue Walters
 - www.suewalters.com – online newsletters of courses
 - Pyrography – a Fox Chapel magazine with a Buyers Guide and more

Patterns

- Fox Chapel Publishing – <http://www.foxchapelpublishing.com> search on pyrography.
- Dover Publications – <http://store.doverpublications.com> Clip art design CD

Places to purchase

- www.carvertools.com – Optima
- www.razertip.com – Razertip
- www.detailmasteronline.com – Detail Master
- www.woodburning.com – Colwood
- www.woodcarverssupply.com – Burnmaster
- www.nibsburner.com – Pens
- Woodcraft – Detail Master
- Treeline www.treelineusa.com

The FOG Burl

A wood gatherer's story

I got a call from Mike Brecht that went like this, "would you like to help me get a burl that I found along the road?" Now who can turn down an opportunity like this. On second thought, how does a burl just show up along the road someplace? My immediate reaction was that this was possibly going to be a project when I heard it was at least three feet in diameter. My reply was, "call Tom and see if he will help with this also."

A short while later I got another call that Tom was in on the burl also and we would meet at Mike's house on Saturday morning. We met at Mike's house and then wandered on down into southern York county, over through Shrewsbury and then west and turned up another road. Where was Mike taking us? Then he slowed down and stopped along the road. Sure enough there was a burl a little over three feet in diameter just laying there on the ground at the side of the road. (FOG stands for found-on-ground).

Mike and Tom had both brought chain saws and tools. I had left my saw in the car back at Mike's because we had more than enough tools already. We rolled the burl around to get a better place to work on it and started in. Mike's saw wasn't cutting too well so Tom got his going and was making good progress. A 20" bar wasn't getting through this one so he had to make multiple cuts to try to get it sectioned so we could handle it. It wasn't long and Tom hit a piece of metal in the burl and then his saw wasn't cutting either. None of us had files or extra chains along so Mike went home to get some extra chains for his saw and pick up my saw.

While we were waiting for Mike to return we spent time looking to see where the burl may have come from. The other side of the road was steep bank that went up about forty or fifty feet to the edge of a field. Tom spotted a tree that had a mark on it where something had hit it. It appeared that a tree was cut down at the edge of the field and the burl rolled down the bank and across the road to its resting spot where Mike had found it. That would have caused a lot of damage if it would have hit a vehicle traveling on the road.

Mike came back with my saw and extra saw chains. We got it cut in half and one of the halves cut into

smaller pieces. I hit the metal with my saw and was done for the day with that one. We decided to load the remaining half onto Mike's truck because he had ramps and would be able to handle it when he got home. The ramps were an uphill situation all the way. We had a cant hook and a bar and three of us for muscling it up the ramps. We did manage to get it into the truck without it falling off the ramps.

We spent about 3 ½ hours getting this burl that was already cut and on the ground into the trucks. Look forward to some interesting turning from Mike and Tom from Oak burl.

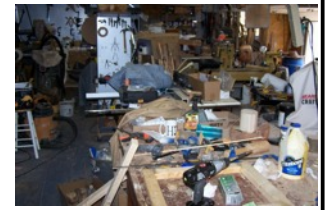
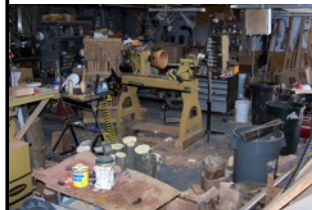
Don Wilson

Shop Organization Hints

from Bryan Sword (Newsletter Editor)

In the last newsletter a picture of Don's shop was shown. Some members expressed surprise at its creativeness.

So to be fair I am including some pictures of my own shop where as you can see all things are in their place and organized. Cherry bowl on lathe ready to be finished. More wood on floor ready to be cut on bandsaw. Anchor Seal ready to be slapped on any fresh cut wood. Yellow air hose ready to be tripped over. Table saw ready to be used once all the stuff is taken off it. Work bench clean and ready for use once all the stuff is taken off it. Electrical cords placed where you can barely reach them. Air filter just at head height so tall persons can bang their heads on it. Ah yes! Truly an organized shop, a sign of a creative mind!



(This description is done Tongue in Cheek for those who may be taking it too seriously.)

Final Reminder

HANDS-ON TURNING CLINIC

8-12 AM SATURDAY, MAY 14

at

Jacobus Meeting Building