



South Central PA Woodturners

Newsletter

October/November 2010

Officers

President - Bill Fordney
717 741-0957
NEROTOO@comcast.net

Treasurer - John Stewart
717 755-8737
JRWS3088@aol.com

Secretary - Carol Woodbury
717 757-2907
carol.ivue@comcast.net

Newsletter - Bryan R Sword
717 225 6807
bryansword@gmail.com



Out Going President

Bill Fordney

Smiles at the thought that
"Hey! This is my last meeting!"

Great Job Bill!

Holiday Dinner - Dec 7
@ John Stewart's
Planning meeting - Jan. 4
Location to be announced
Cabin Fever -
January 15&16, 2011

SOME THOUGHTS...

From our President

What a great couple of months we have had!

In October Jon Amos presented a very interesting demo on spindle turning. Two comments here -

First, we have quite a few new members, many of whom have not turned before. Spindle turning is where most of us started. It gives "newbies" some good experience in the proper use of tools and prepares them to move on to bowls, hollow vessels, and things of that ilk.

Second, it gave the experienced bowl turners in our club a good refresher course on some basics

Thanks to Jon for his fine efforts to enlighten us.

In November, at our regular meeting, which was the highest attended meeting ever with 44 attending, Mark Supik from Baltimore presented a program on "End Grain, Natural Edge Bowl Turning." Mark made it look so easy. He has a woodturning business in Baltimore, where he also teaches turning. I believe everyone was able to learn something from Mark.

Then, on November 6 we had our first ever all day seminar. We were fortunate to have Keith Tompkins, a professional turner from New York, spend the day with a full house. We had several guests from the Cumberland Valley and Lancaster clubs joining us for the day. Keith started with a mini-version of his "Ten Basic Cuts" and went on to show us many of his techniques. He also emphasized sketching our ideas and challenged us to "think outside the box" in our creativity. Thanks to all who supported this day.

Also at our November meeting we elected a slate of officers to take our club into the future. They are:

President - Don Wilson
Vice-President - Tom Deneen
Treasurer -- John Stewart
Secretary - Carol Woodbury

Please give these folks your full support. As our club has grown we need the help of many members to keep it growing.

President's Thoughts continued

This will be my last "Thoughts" as president. It has been an exciting four years.

When I took over as president we had just over 30 members with an average attendance of about 15. Today we have over 60 members with an average attendance of about 35. During these four years we began running little notices in the Weekly Record and the Community Courier. There has not been one meeting since we started these notices that I have not had a phone query or folks just coming to a meeting.

During this time we were able to purchase a larger JET lathe. We applied for, and received, an AAW grant to purchase some video equipment. You have seen this in action at the last several meetings. We also purchased a sound system to go with the video stuff. We also moved to the church building, when Valen Frye's shop was no longer available – a good thing, too, since we could never get 35 people in his shop. And we managed to hold our first full-day workshop with a professional turner.

In my opinion the caliber of demonstrations presented by our own members has improved greatly over these years. I won't mention that list of names for fear of forgetting someone, but my thanks to all who so willingly agreed to be a demonstrator. By the way, there will be many opportunities for others to be demonstrators in the coming years.

I should also mention the caliber of our newsletter. It has improved greatly since I became president and Bryan Sword and Carol Woodbury are to be commended for putting it together. The photos have been great and we thank Phil Reed for doing the photography for us. Going forward we should consider entering it in the AAW competition for club newsletters.

Hopefully, I will now have a little more time to spend in my shop. **Thanks to all!!!**



Carol Woodbury
Secretary- elect



Barry Stump with
the raffle prize

October Minutes

Guests: President Bill Fordney introduced 4 guests: Tom Webb, Mark Daugherty, Ed McCormick and Dave.

Treasury Report: He announced the treasury amount of \$1,901.63, which will be swelled by this evening's dues collection. After being informed of our purchase and purpose, AAW has sent the remaining \$140 from our grant, which assisted in the purchase of video equipment.

Don Wilson and Bill plan to look into purchasing a wireless microphone and speakers.

Club Officers Election. We were reminded that at the Nov. 2nd meeting we would vote on a slate of new officers.

Club Raffle: The raffle item, a maple bowl by Barry Stump, was won by Lloyd Shelleman.

Woodturning Events On Nov. 6th

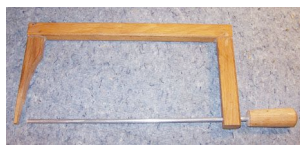
1. Mike Galloway sent information about a "Turn for the Troops" charity event at Woodcraft,
2. Bill took a hand count to judge interest in having Keith Tompkins come that Saturday to demonstrate design, spirals, scrolls, etc. The building holds about 40 people, so if there is room, Bill will invite other clubs. The church ladies have agreed to provide lunch and the whole day will cost \$20, payable in advance to John Stewart.



Boy Scout Safari: The Boy Scout Safari at Wizard Ranch last Saturday was a huge success with about 3,000 attendees. Tom D., Bill F., Phil R., Charlie S., and Don W. represented the club and turned continually from 8:30 a.m. until they ran out of wood at 4:30 p.m. Scouts and families stood in line, sometimes for up to an hour, to receive a bowl or top they watched being turned. We were treated to a slideshow of pictures taken during the day.



Cabin Fever: Jan. 15 and 16, 2011. We will again have one booth to turn in and one from which to sell members' items. Proceeds from any items brought for charity or turned that day will go to a local charity (to be determined) and the 10% of members' sales required as payment to Gary for the booths is again to be donated to the Agricultural and Industrial Museum in his name. John Stewart asked that we indicate the wood and maker's name on any work brought.



Tips and Tricks: Custom bowl bottom thickness gage.

Bryan Sword showed his handmade precision tool for measuring the thickness of a bowl bottom. Bryan stated that such a tool has saved many a bowl from becoming bottomless due to over zealous turning or drilling too far when making a depth pilot hole.

Show and Tell



Plum hollow form
Phil Reed



Walnut centerpiece bowl
Elmer Absher



Yew lidded vase
Elmer Absher



Spalted maple bowl
Barry Stump



Weeping willow bowl
David Neuberger



Cherry turned leg
David Neuberger



Douglas fir vase
Lloyd Shelleman



Mahogany railing
Jon Amos



Walnut salad bowls & Ornaments



Olive goblet



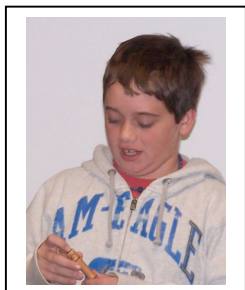
Walnut bowl-platters

Show & Tell Notes:

Comments and explanations by the show & tell presenters.

Barry Stump	Spalted maple bowl	finished with Myland finish & Hunt wax
Al Herner	4 square walnut salad bowls	finished with mineral oil & beeswax finish
	2 Christmas ornaments	of walnut & spalted maple
Lloyd Shelleman	Douglas fir vase	from an old porch post to show that you “don’t need new wood” to turn nice objects
Jon Amos	Mahogany railing segment	Jon completed about 150’ of this railing - which was then by the request of the owner painted white !!
David Neuberger	Weeping willow bowl	(lovely pattern but miserable to turn)
David Neuberger	Cherry turned leg	(1 of 3 legs for freeform coffee table. With this opposite turning you must hand sand. Dave asked why the cherry had become slightly green. There was discussion with suggestions, including not using water, but using alcohol instead to raise the grain for sanding.
Bryan Sword	Olive goblet	w ingenious “save” (Bryan told how he had reattached the very thin stem to the goblet)

Martin Stolpe showed photos of a huge carved mascot for Millersville U. He reported that he has thousands of board feet of wood from F & M trees which have fallen, Kentucky coffee tree and other unusual types. He mentioned that 2 of Don’s platters will be auctioned to benefit the Lancaster County Conservancy. Martin will be cutting trees at Buchanan’s home in the near future. Martin also handed out ads for Gochnauer’s Holiday Open House and Woodturning Demonstration on Nov. 5 and 6 in Lancaster.



Tom Frey Christmas ornament unknown wood,
practicing on his new chuck



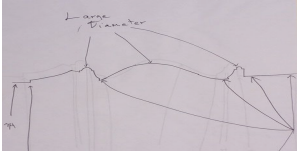
Jon Amos
Spindle turner &
Skew tool
demonstrator
extraordinaire

October Demo

Spindle Turning by Jon Amos

Jon runs an architectural millwork shop in Fallston, MD. He showed some of the work he does, sending around a photo album of his lovely custom cabinetry.

He defined Spindle Turning as work mounted with the axis running with the grain - “it has to do with orientation”. Templates are used for multiple replications (like balusters); he first created templates by hand but now uses a Madison or SCMI with spring-loaded tracer.



Jon's Special Tools
tie or shock absorber
rods, sharpened
wrenches, whatever
makes a bead or cove.

October Demo continued

Jon whipped out several demonstrations of coves, beads, and ogee curves. Generally he uses beech or poplar but for the club demo he kindly brought pine, being softer and not so likely to injure the front row of viewers. He suggested practicing thus: first rough round, then pencil mark segments, make a cut on each line, do series of rolling cuts ON the line, always trying to take a down-grain cut to reduce sanding. For coves you can use either a skew or bowl gouge. (He has improvised tools from used car & mower parts!) Do a cove and a bead, then blend together to create ogee shape.

With the assistance of large diagrams (thanks, Mrs. Amos!), he explained using a **reference tablet, tag board with** the diameter and placement of sections marked. Most spindles have one large diameter and equal smaller top and bottom diameters. For the demo, his were 1 _" and _". Jon prefers a minimum of marks and has his own shorthand. Warning: it's better to change a curve than alter a shoulder, since the eye will notice different levels of shoulders more readily.

Matching spindle for the set he brought: On the turning blank, he pencil marked from the template. You can get the diameters a couple of ways:

- a.) parting tool down to the correct depth right off the bat at the mark,
- b.) going down to the correct depth staying away from the pencil line.

He uses normal, but huge calipers, but also ground wrenches to judge as he works. The wrenches can even be utilized in the turning - he showed this with the _" areas. Then connect the dots. The original turning is always kept handy to judge the piece currently on the lathe - in case he needs to use calipers or eyeball it to remind himself of what he's doing. He saves the beads for last, then does the shoulders at the beads.

His tool rest is above center about flush with what he's turning since most lathes are too low for Jon's height. He uses a skew for almost everything; his is flat on one edge and convex on the other. You must use continuous motion and "positive pressure" with a skew. Lathe speed is about 1900, as slow as he can get good control, although the trade off is that tools must be continually sharpened.

The crowd was tough on Jon. They asked questions, ribbed him, and requested a square shoulder with ogee be demonstrated. He did it with aplomb, cutting in with the point and easing back into it, trying always to keep paring, not scraping. He explained he likes to stay off the point of the skew, using the heel, because if you practice a good shearing cut with it you will notice it's easier to see where you are. Also, if you make a good shearing cut, you don't need much sanding, only smoothing. Remember that sanding changes your shape and you need multiples to be matching, so you can't sand a lot.

A most helpful demonstration. Thank you to Jon.

New Officers for 2011



Don Wilson
President Elect



Tom Deneen
Vice President Elect



John Stewart
Treasurer



Carol Woodbury
Secretary Elect

November Meeting

Minutes Nov. 2, 2010

By Carol Woodbury

GUESTS: President Bill Fordney introduced three guests: Richard Raubenstine, John Vlah and Keith Klahold.

RAFFLE WINNER: Barbara Palastak won Lloyd Shelleman's beautiful boxed pen set in the raffle.

2011 Officers: Upon the motion by Sam Reimold the following slate of officers for 2011 was adopted:

Don Wilson President
Tom Deneen Vice-President
John Stewart Treasurer
Carol Woodbury Secretary

Committee sheets are still available for sign up.

Announcements:

The AAW Symposium is in St. Paul this year; information was on the bulletin board. It will feature an exhibit called "Turning 25 - A Celebration" and every club is encouraged to submit one item for inclusion and subsequent sale; discussion on this will be held at December's meeting. The board also held an AAW message about the search for a new Executive Director and a letter from Craft Supplies about their gift certificate program - \$100,000 worth given out to date - and the suggestion to pool club orders.

Cabin Fever dates are Jan. 15 & 16, 2011. Set-up will be Friday the 14th and members are urged to come help out. We will take the club's 2 mini-lathes and John and Bill's lathes to do demonstrations.

WE NEED TOPS FOR CABIN FEVER!

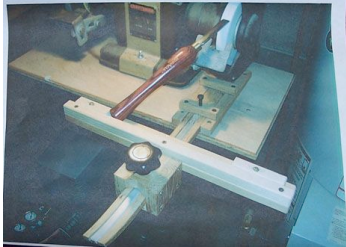
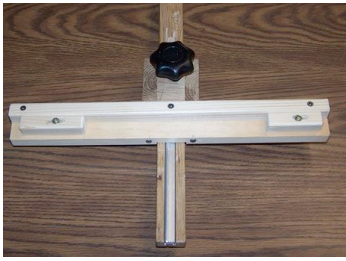
Phil Reed, our TOP MAN, says the price of admission is 50 tops, made ahead of time - he already has finished 66! Hard to 'top' that!

But really! Each member could do at least 3 - 10 tops. Then Phil & others would not feel the pressure of doing them on the spot.

TREASURER'S REPORT per John Stewart

The current balance in our treasury as of November 30, 2010 is \$3,100.39.

DUES: There are some members that did not pay their 2011 dues. Individual membership is \$30.00 and family membership is \$40.00. You may remit a check payable to SCPWT to; John Stewart, 3088 East Prospect Rd, York, PA 17402. If there is any health or financial problems that you cannot pay your dues, please let Bill or John know.



Tips and Tricks:

Tom Deneen says, “don’t put your thumb out to catch whatever you’re parting off!” He also showed the stand he made with a plumber’s flange to keep large logs off the ground when sawing them with a chain saw.

(Additional Note: Tom demonstrated to an appreciative crowd at the York County Heritage Trust’s Oyster Fest in October.)

Charlie Stuhre showed his version of a Wolverine Sharpening jig for sharpening spindle gouge or skew; it’s an adjustable fixture to hold the tool in place, with a metal strip down the center to allow smooth adjustment. His cost of about \$4 saved him \$115 - way to go, Charlie.

More Announcements:

Historic Wood from James Buchanan’s Wheatland

Martin Stolpe announced he would be getting all the wood from Wheatland, Buchanan’s home in Lancaster, when they put a bus lane all around the property. About 40 trees will be cut and the wood will be available in any amount, at a cost of one turned item per person to sell in the gift shop to benefit the Mansion.

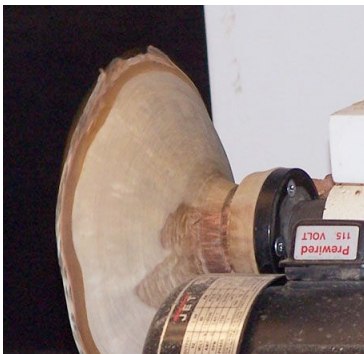
Kay Pomeroy also brought tulip poplar wood from Wheatland for members to take home tonight



Martin Stolpe
Provider of more wood
than we can ever turn in
our lifetimes.

Candid Pictures of our Illustrious club members showing off their art.





November 2010 Demo

PROPER TOOL TECHNIQUES, Presented by Mark Supic

*“When you turn, you’re whittling.”
“Think whittling {and} think shearing motion,
like using a samurai sword.”
‘We’re all into turning for fun.
It fulfills the need to make objects and relax.’*

In an excellent, easy-to-understand manor, Mark Supic, professional architectural wood turner from Baltimore, demonstrated tool techniques. The fact that he has been turning since 1975 was obvious as he showed how he uses his body along with his gouges to produce both a mushroom and a large bowl for the group.

Mark describes himself as primarily a spindle turner, one who prefers end-grain woodturning. He suggests practicing with the mushroom shape. He made a large mushroom for us as he spoke of tools and methods. Mushroom turning, he says, is his relaxation - mid-job or at the end of the day.

Tips while producing mushroom:

- Use sharp tools
- Use wet wood
- Rub the bevel for clean cut and finish
- “Peel that potato” with roughing gouge - just peel, not cut
- Hold spindle gouge perpendicular to the body, handle against the body and blade resting firmly against the rest. For a clean cut move your body not your arm
- Project your whole upper body slightly over the wood
- A bowl gouge about 40° angle does interior of bowl
- Sneak up on the edge for natural edge bowls
- For mushroom, with bowl gouge turn the under side of cap Be tight against the wood
- Spindle gouge the stem and mix bowl cuts & spindle cuts
- The position of the gouge as it travels from larger to smaller shape is important
- To find best spot to connect with the wood, think of clock - 12, 3, 9 o'clock positions - and for gouge cut from your right connect between 1 & 2 or from the left between 10 & 11 o'clock
- Once you make a mistake, clean it up so you have a good cut
- When thinning in preparation to disconnect item, never thin on the motor side or it will be so thin that it will stop turning.
- Like whittling, make one cut then a relief cut from opposite side

Tips while producing birch bowl:

- Flatten or make concave end with parting tool so you can use a face plate
- After parting tool, use spindle gouge, starting cut, leaving it, starting again, with 11:00 o'clock position until you're all the way through
- Slicing across end grain, get a flat bottom to work with.
- Turn the wood around and use 1:00 o'clock spot to bring it in.
- Screws for end-grain faceplate need to be heavier - suggests hinge screws no. 12 or 14, since the coarser the thread the better the hold
- Mark begins with the interior of a bowl, using bowl gouge straight in, holding it in a way comfortable to the person turning
- To create a clean edge, work from outside in to get round top
- Take off end, cleaning nub off
- Shape inside first and get it as good as it can be
- Keep in mind as you go deeper, staying at the 1 o'clock position, the look will change
- Rough with the rest high, almost to the middle and move body with the tool moving from down to up, out to in.
- Final cut however, move in to out with single swipe, at center pump a little to remove nub
- With any irregular surface remaining, scrape, not cut, to smooth it out
- NB: MEASURE SCREW DEPTH and make a mark so you don't hit the screws
- Slightly below nub, make slight depression in center and work gently out to the edge

General Tips:

- Wood likes to be sheared
- For natural edge bowl, to avoid bouncing tool, go in and move away
- Bowl gouge removes more waste
- Bevel controls the way you're going, have it ride the material you've just cut
- Measure with fingers not caliper, make it consistent thickness
- Remember you can't go back to work on unsupported material
- Sanding is a waste of time on wet wood
 - Tom at this point suggested using air compressor for drying; be careful not to blow bark off your natural edge
- 80 grit paper to remove ridges
- Mark puts the end of the tool rest into the center of the bowl
- Mark tries to keep tools and hardware to a minimum.
- With parting tool cut way back with tip for clean corner, then drop to 11:00 to cut bottom out: cut, relieve cut, pump handle up and down and, voila, it's separated

Drying:

He dries to almost 100% by

1. Placing piece in clear plastic bag
2. Daily turn bag inside and replace item for 3 to 7 days
3. When condensation stops showing, leave piece out 1 - 2 hours each day then replace
4. When mostly dry sand with 400, oil, sand, oil, 600, then when totally dry use paste wax.

Mark doesn't like color so he also uses flat or semi lacquer, or if you want to eat from your piece use mineral oil.

Mark Supic bowls and mushroom



Show & Tell November 2010



Spalted curly maple
Phil Reed



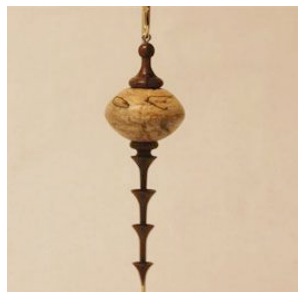
Spalted maple bowl
Don Titus



Birch goblet
Don Titus



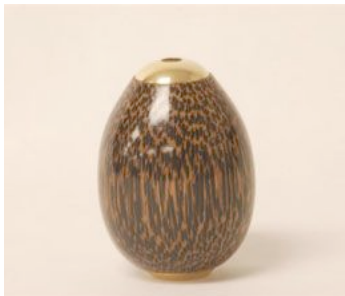
Pear acorn
Barry Stump



Hollow spalted maple
Al Herner



Walnut bowl with feet
Jon Amos



Kaleidoscope egg
Black palm - Kay Pomeroy



African Blackwood box
Dean Swaggert



Royal Paulownia
Mike Brecht



American chestnut
Bob Gochenauer



Holly pen
Charlie Stuhre



Walnut, Pine, Maple bowls
Richard Raubenstine

Keith Thomkins Demo

FUN!

FUN, a word we heard twice in one week in November!

Both demonstrators, Mark Supic and Keith Thomkins, mentioned that we turn mainly for the fun of it.

On Saturday, Keith inspired us all with his constant exhortations to think how something **COULD** be done, never that it **CAN'T** be done. He showed his many creative solutions to complex turning and discussed methods, etc. as he worked on a winged bowl and a cube.

With apologies to the membership, I have to admit that I did not take notes during Keith's wonderful, funny presentations. I simply enjoyed myself. Everyone there had a great time – not to mention that we ate exceedingly well, thanks to the church ladies.

Carol Woodbury

For Sale

Members are welcome to email me pictures and/or a discription of tools or related items you wish to sell.



MICROWAVE WOOD BOWL DRYER

You too can have your own special microwave to rapidly dry your green wood creations. Now you will not have to use your kitchen microwave you will have one for your very own in your shop. A few scratches, but works great. (Can be used in kitchen also)

Black Kenmore (Consumers Report “Best Buy”)

Only \$25 or make an offer.



Custom router table top with universal template for sale. Has stand and mounted on strong base. Includes all dust and tape marks! Measures 32” x 19.5”. Just taking up space in shop. Cost \$75 just for top when new. I made the base.

Only \$25 or make an offer.

Contact Bryan Sword (717) 225 6807 or cell 717 817 5407