

SOUTH CENTRAL PA WOODTURNERS NEWSLETTER

OCT-NOV 2008

Coming Up!

Saturday October 4

Wood turning demo at Collinsville library.
Contact Tom Deneen for detail

October 7 Meeting Demo

Mike Galloway will be demonstrating
how to turn a laminated weed pot

Yew wood available at John Stewarts donated by The Forester – Felix Sylvius/

John Stewart, 3088 East Prospect Road, York, Pa.
755-8737

See information by Felix on Yew wood at the end of
the newsletter.

August Meeting

It was a great gathering of woodturners, significant others and friends at our annual summer picnic. Hosted by Joan and John Stewart at their home, we had a large turnout of members providing an assortment of wonderfully prepared dishes and deserts to satisfy the most discriminating palate. The chicken provided by John and Joan was, as usual, wonderfully prepared following a secret recipe that must be kept in John's vault.

President Bill Fordney welcomed all and announced that he was not the "President for Life" nominee. It was a great disappointment to the crowd. Bill said that the time is coming up for his replacement. So start your campaign soon, as we are sure there will be a large number of you hoping to gain that illustrious position. **Ask not what your club can do for you, but what you can do for your club.** Remember, it really pays well.

Treasurer's Report.

From the last report:

Deposits \$21 for wood sales and \$15 for membership.

No Pay Outs

Bank Balance \$1814.93

Member Announcements / Trips

Tom Deneen went to a turning clinic in Utah and did hands on work with some of the greats including Richard Raffan. Tom showed us a custom bowl finished by Raffan. Tom says they were instructed to make a 1/8" wall thickness bowl. When Raffan inspected his, he thought it could be a little thinner on the bottom and took the tool. See the results in the photo, even the greats make mistakes.

Tom stopped by a crafts shop on his way back and sold all his production from the class. So Tom is sitting pretty right now with big bucks.



Richard Raffan custom bowl

Show & Tell

There was a great showing of work at the picnic, more than ever before. Each was a piece of stand-alone art. These are a few examples, with many more shown than recorded. Thanks for the many examples of different turnings presented.



Don Naylor platter



Elmer's segmented block bowl



Elmer's gluing jig



Tom's inspirational bowl



Phil Reed Hollow vessel



Mike Galloway
segmented bowl



September Meeting

President Bill Fordney welcomed all. We had new members and many guests. It seems that the articles put in the freebie newspapers are working.

Bill is seen here taking a firm stance on not accepting the “President for Life” nomination. Oh well, we tried.

Dues have been officially raised to \$30/year; \$15/half year. We have 37 paid members.

We are looking into sharing dates with other local clubs for demonstrators through AAW.

Coming shows at which we will have a booth at are:

Woodworks in November 7-9

York Expo Center

Enjoy 3 great days when the world of woodworking comes to you. See new products and shop face-to-face with top tool companies.

Cabin Fever - January 17 & 18

We generally raise up to \$500 by selling turning and tops at these functions to donate to worthy charities. We have donated to Make A Wish and Easter Seals. This year the BRS landscape fund is in the running.

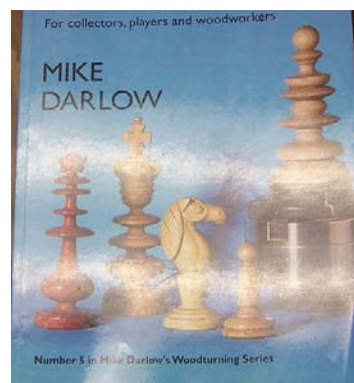
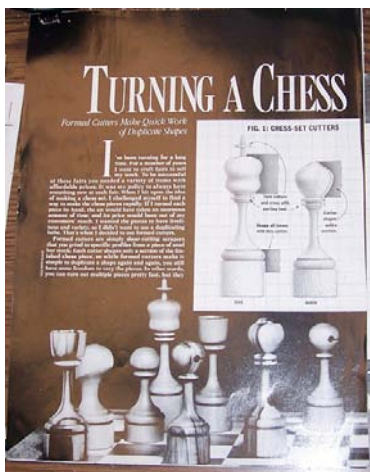
Treasurer's Report.

From the last report:

Deposits \$21 for wood sales and \$15 for membership.

No Pay Outs

Bank Balance \$1814.93

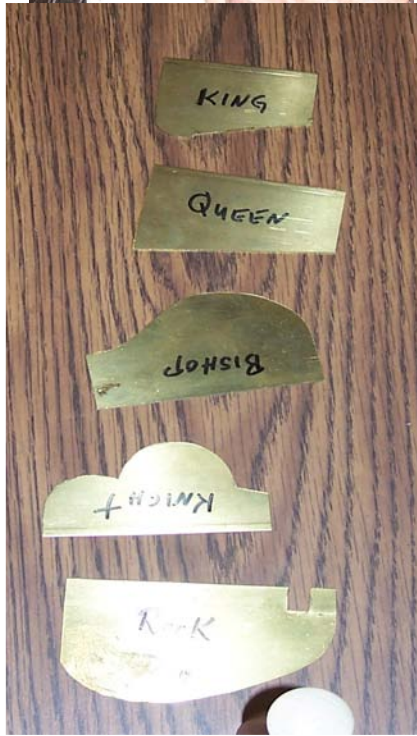
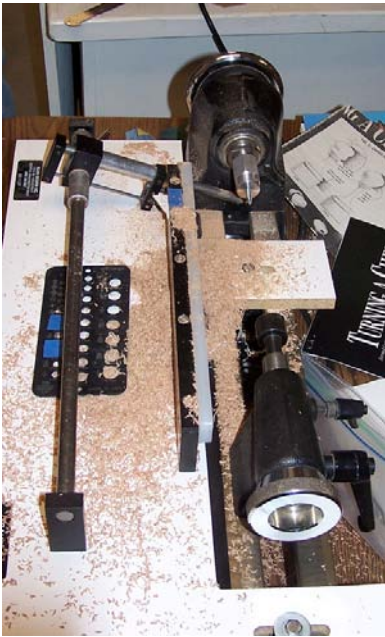


DEMO – Repetitive Turning

Bill Fordney is an avid chess set collector and turner of chess sets. He recommends two books - Turning Chess and Turned Chessmen. He uses a duplicator and a standard lathe to do his work. Bill points out that it takes much more time to paint the pieces than to turn them. The duplicator uses brass templates cut on a bandsaw using patterns. Using a lathe you can make your own custom tools. Bill has had some made by a local machine shop.

Bill says the tool rest on the duplicator does cause some problems. But a good turner doesn't complain about his tools.

All ended well with great demo of how to set up each method and save time for on turning duplicate pieces.



Show & Tell

Bill was so excited about doing the demo that he forgot his notes and almost neglected to call for Show & Tell. But with all those anxious faces waiting their turn at showing their works of art he was quickly reminded. It is amazing the quality of work done by our members. We all know what it takes to produce a great piece, so we tend not to give the presenters their due. Also the presenters do not take enough credit for themselves. So I say lets at least give a round of appreciation to all the Show & Tell people. Lets make it more than the sound of one hand clapping. HERE! HERE!



Maple burl vase-Phil Reed



Walnut jewelry box-
Charlie Stuhre



Segmented vase-oak& walnut
Elmer Absher



Walnut table leg-Elmer Absher



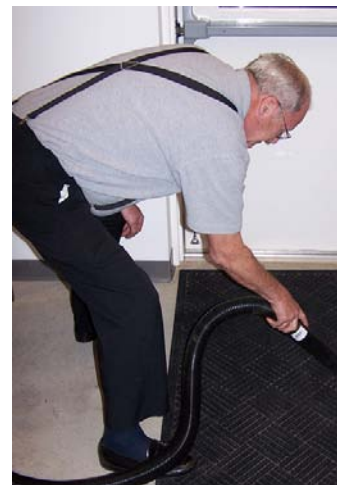
Cherry platter with
pyrography decorated rim-
Don Wilson



Honduras Rosewood Burl
bowl-Dean Swaggert



Ash howls-Tom Deneen



And of course let's us not forget our clean-up crew that makes the church like us. Thanks to John Stewart staying to clean up when the rest have left.

Late Bulletin -Martin Stolpe, our resident forester, has been helping Stacy Gongaware dismantle a fairly large walnut tree at Stacy's home. You will find an article from Martin in the next newsletter about this wood. There are many large and figured crotches as well as some uniformly grained pieces. If you would like more information before the newsletter comes out, give Stacy a call (225-5011) or call and talk to Martin (717-393-2184). You can make arrangements to get some of this wood. Stacy would like to get something for this wood, but he has indicated that he would work out a price with part of the money being a donation to the club.

FROM THE FORESTER

YEW WOOD COMES FROM AN EVERGREEN BUSH. MAYBE YOU HAVE SEEN YEW USED AS ORNAMENTAL PLANTINGS. YOU MAY HAVE SOME AROUND YOUR OWN HOME. AT OUR OCTOBER MEETING I WILL BRING A LOAD OF YEW WOOD IN MY VEHICLE FOR ANY OF YOU WHO WANT AS MUCH AS YOU CAN TAKE.

UNLIKE MOST EVERGREEN WOOD YEW IS NOT PITCHY. IT IS CLOSE GRAINED, HARD AND HEAVY. YEW, WHEN EXPOSED TO SUNLIGHT, OVER TIME DEVELOPES A DEEP REDISH PURPLE COLOR. THE PIECES ARE UP TO 6' LONG DOWN TO ABOUT 1' OR LESS. DIAMETERS VARY FROM 8" TO 1".

YEW IS VERY STRONG, LIKE HICKORY SO MAKES GREAT WALKING STICKS. ITS CLOSE HARD GRAIN IS GOOD WRITING INSTRUMENT MATERIAL. OF COURSE SHARP TOOLS ARE BEST WHEN TURNING A HARD WOOD LIKE YEW.

STACY GONGAWARE AND I HAVE BEEN CUTTING UP A LARGE WALNUT TREE ON HIS LAND ON ZEIGLER CHURCH ROAD JUST SOUTH WEST OF NEWSALEM OFF STATE ROUTE 616. THE BUTT LOG WAS OVER 2' IN DIAMETER. MOST OF THE TREE HAS PRODUCED MANY LARGE AND FIGURED CROTCHES AS WELL AS UNIFORM GRAINED PIECES. SOME BOARDS WILL ALSO BE AVAILABLE.

IF YOU ARE INTERESTED IN SOME UNUSUAL WOOD FOR TURNING CONTACT STACY OR ME. A DONATION TO THE CLUB AND YOUR PARTICIPATION IS ALL THAT YOU NEED. FELIX SYLVIVUS



Last but not least a picture of the big Coho salmon taken by yours truly on a recent trip to Alaska. They were really running this year.