

# The South Central Penn Turner

Newsletter of the South Central Pennsylvania Woodturners, October-November 2006



## October 3 2006

**Time:** 6:30 p.m.

**Place:** Carol Frye shop, 535 Conewago Creek Road, Manchester, PA.

**Directions:** From York, take exit 28 (old exit 12) off I-83. Go east on Susquehanna Trail (about ¼ mile) to a right onto Conewago Creek Rd. Go approximately 0.8 mile to 535 Conewago Creek Rd. on your right (Look for red barn next to the road).

**Program:** Business meeting, Show & Tell. Continue to work on upcoming Woodworking show. **Bring some wood and your tools** to begin turning small items for the donation to the Make A Wish Foundation. If you have never turned a small item we will teach you. If you have turned a small item you can teach us.

## November 7 2006

**Time:** 6:30 p.m.

**Place:** Carol Frye shop, 535 Conewago Creek Road, Manchester, PA.

**Directions:** From York, take exit 28 (old exit 12) off I-83. Go east on Susquehanna Trail (about ¼ mile) to a right onto Conewago Creek Rd. Go approximately 0.8 mile to 535 Conewago Creek Rd. on your right (Look for red barn next to the road).

**Program:** Business meeting, Show and Tell and continue working on small turning and final planning for the Woodworking show. Also we will be making a jig for reverse jam chucking called a Kirsten Cone. More about this later in the newsletter.



A few shots of this year's club picnic

## CHIPS FROM THE PRES

If you haven't been to a meeting in a while, exciting things are happening. We had a seminar on Sept. 23 with Kim Blatt. Several turners spent the day at Dave's shop learning how to turn a lidded vessel. We are going to have a booth at the Woodworkers show in York. We will need everyone to participate to make this a success. Come join us and show Yorkers what woodturning is all about. More info on these two items in the main body of the newsletter.

## SCPA Woodturners Information

President: Don Naylor	717/229-2553
Vice-Pres.: Dave Barkby	717/292-0173
Secretary/newsletter:	
Mike Galloway	717/757-2907
Treasurer: Jerry Kopenhaver	717/432-2753
Librarian: Mike Galloway	717/757-2907
Safety: Lloyd Shelleman	717/677-6458

The South Central Pennsylvania Woodturners is a Chapter of the American Association of Woodturners (AAW). Membership dues are \$20/year. For membership, send a check, payable to "SCPA Woodturners", to the treasurer, Jerry Kopenhaver at 50 Warrington Ways, Wellsville, PA. 17365. AAW membership information can be found at [www.woodturner.org](http://www.woodturner.org).

## NEW CLUB VIDEO'S

Thanks to Mary Diehl the club now has 13 new videos. Mary donated Dick's collection of videos. There are 2 tapes from the 1998 AAW Symposium, and 1 AAW tape on turning bowls. The rest of the tapes contain over 70 episodes of the WoodWright Show. These tapes will be available at the next meeting so be sure to rent a few (\$2.00 each) and get ready for those long winter nights. Thanks again Mary for this great addition to our club library.

## ELECTION RESULTS!!!!

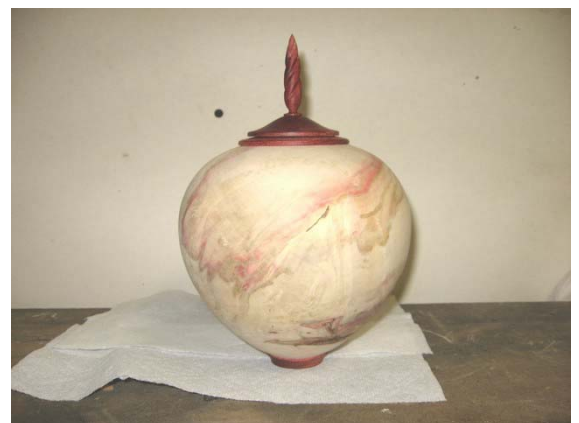
Well it was a close race but after all the ballots were counted several times Bill Forney came out the winner. Bill will be taking over from Don after the 1<sup>st</sup> of the year. All other positions will remain the same. Please give Bill a hand to keep our club growing.

## SCREWDRIVER KITS

There are still 6 screwdriver kits available for \$5.00 each. Please see Mike Galloway if you are interested in one.

## TURNING RAFFEL

At the Kim Blatt seminar Kim donated the lidded vessel that he turned that day to the club to be raffled off. Below is a picture of the vessel. Kim took it home with him to put a finish on it. This turning is valued at around 600 to 700 dollars. Tickets will be on sale for \$5.00 each at the next 3 meeting. The drawing will be held at our Christmas party. You do not have to be present to win. This is a great way to support the club and have a chance of owning a beautiful turning by one of the top turners in the country.



# KIRSTEN CONE

At our seminar with Kim Blatt he showed us a tool that he used to reverse jam chuck a turning. The tool is called the Kirsten Cone. Oskar Kirsten of the San Diego Woodturners invented it. It is a very simple device that supports the top of the vessel with a nylon cone and drives the vessel on the lathe with a small sandpaper disk that is secured between the bottom of the vessel and the live center.

Kim gave us a handout with a list of all the parts you need to make one of these items. It was suggested that the club puts in an order for all the parts and we could assemble them at the Nov. meeting. The cost to build a cone will be around \$35.00. If you want to make your cone out of wood instead nylon the cost will be around \$23.00. I will need to know at the October meeting if you are interested in making one of these cones.

If you cannot make the meeting contact me at [mikega@suscom.net](mailto:mikega@suscom.net) or phone me at 717-757-2907 by Oct 6<sup>th</sup> so that we can place the order.

Below are some pictures of the device.



## SANDING TIP



When sanding large pieces Dave uses a belt sander. Notice that Dave adjusts the belt to run slightly off the rollers.

# WOODWORKING SHOW

For those who attended the September meeting, you are aware of our participation in the woodworking show at the York Expo Center on November 10-12. We will have a double booth where we will have the club's two lathes (perhaps more) and members have signed up to help man the booth. We will demonstrate turning by making small items such as tops, which we will give away for a donation – and, in turn, give those donations to a local charity. We also plan to have some shelves and a table or two to display examples of our work.

For those who missed the September meeting, I asked everyone to bring some finished pieces – bowls, spindles, pens, ornaments, works of art, whatever – to the October meeting. Peggy and I will gather them up and arrange a display for the booth. Please bring as many items as you want. We will coordinate the display to fit the space and it would be better to have too many items than not enough. Please bring along something to identify your items – include your name, a description of the item, type of wood(s) used, anything significant or unusual (like the number of pieces in a segmented turning), date made, etc. We will make cards to place with the items including as much of your information as will fit on the card. In essence, this will be “the best of show and tell” for our club.

Please print legibly and be sure that we will be able to match your items with the correct cards.

If you have not already signed up to help on one or more of the days, we must know if you can help by the October meeting as we must submit a roster of names which will allow demonstrators to get free admission to the show.

For some degree of uniformity, we decided to have a disk made from which shirts can be embroidered with our “patch”. We will go with a polo type shirt. I will have the catalog from Athletic Lettering at the meeting with a number of prices, styles and colors of shirts to choose from. I hope to have a completed shirt to show. We will need to put an order together at the meeting in order to have enough time to have the shirts completed in time for the show.

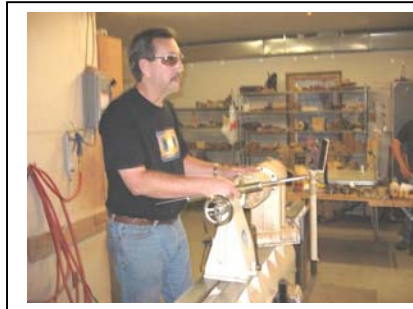
If you cannot be at the meeting and have items for display, or would like to help man the booth, please call me at 717-741-0957 for more information.

This is our first attempt at something like this and we need to “do it right”.

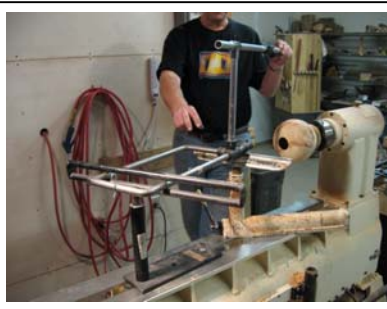
Bill Fordney

<b>ITEMS FOR WOODWORKING SHOW</b>	
NAME	_____
PHONE	_____
ITEM NAME OR DISCRIPTION	_____ _____ _____
TYPE OF WOOD(S)	_____ _____ _____
OTHER FEATURES OR COMMENTS	_____ _____ _____
PLEASE FILL OUT ONE FORM PER ITEM	

# KIM BLATT SEMINAR



Kim started with a piece Box Elder. Most of his worked is roughed turned and then sealed and left sit for a few weeks. He does this to avoid movement in the piece after it is finished.



After getting rid of most of the inside of the vessel which he does by running the lathe in reverse he switches over to the Jamieson hollowing bar with a laser attached to get down to the final wall thickness.



The laser is set by locking it at the desired wall thickness then turning and watching the laser point. When the dot turns to a long line you know that you are at the correct thickness. You must keep the cutting edge of the tool and laser point aligned at all times to get the correct reading.



Here Kim is attaching the base to the body of the vessel. He makes the bases of his turnings from kiln-dried wood. This keeps the bottom from warping out of shape.



Here is the piece after the collar was turned and inserted. He does not attach the collar, lid or finial until after he puts the finish on them.



The finial is turned and ready for carving. Kim used micro files to do the carving.



The finished turning.



A few examples of Kim's work.

# SHOW AND TELL



Mahogany platter 18 3/4 inches by Don Naylor



Walnut chess set pepper mill by Bill Fordney



Elmer turned these bud vases and gave one to each of the ladies at the club picnic. By the way Elmer has a new email address. It is wood373@aol.com



Three plates turned by new member Bill Glass



Turned, carved and dyed Hackberry and Maple box by Mike Galloway



Bowls by Bryan Sword

# SHOW AND TELL



Gold painted vessel turn from sycamore and Oak burl vessels by Phil Reed.  
Phil only has about 100 more burls to turn.



Birdhouses and bottle stop by  
Bryan Sword



Nice little mushroom boxes and small ornaments by  
Tom Deneen



Screwdrivers by Mike and Elmer