

The South Central Penn Turner

Newsletter of the South Central Pennsylvania Woodturners, May-June 2005



Oak burl hollow form by Nick Aloisio

May 3, 2000

Time: 6:00 p.m.

Place: Carol Frye shop, 535 Conewago Creek Road, Manchester, PA.

Directions: From York, take exit 28 (old exit 12) off I-83. Go east on Susquehanna Trail (about ¼ mile) to a right onto Conewago Creek Rd. Go approximately 0.8 mile to 535 Conewago Creek Rd. on your right (Look for red barn next to the road).

Program: Business meeting, Show and Tell followed by the program by Nick Aloisio on how to turn boxes. Nick will demonstrate how to turn a Richard Raffan style simple box.

June 7, 2005

Time: 6:00 p.m.

Place: Todd White's shop (at his house) 7 west Maple St. East Prospect

Directions: From York, take route pa 124 (Mt Rose Ave) to the square in East Prospect. Park in the parking lot on the left hand side of the square. Todd's shop is next to the parking lot.

Program: Business meeting, Show and Tell. We will be making tools for turning at this meeting. The best tools are the ones you make so plan now to attend this meeting and make a new tool for your collection.

SEE YOU AT THE MEETING

CHIPS FROM THE PRES.

When I raised my hand in February and said I would be President of this organization, I had great expectations. I would like the club to grow in membership and knowledge. Since then we have had two meetings with a total of 26 members showing up. That's thirteen at each meeting. I have either handed out or mailed questionnaires to each and every member that I have addresses for. I have received a total of 9 back.

What will it take to get the membership interested in coming to the meetings and contributing to the club? If you are staying away because you are too busy or Tuesday is a bad evening for you, maybe we could have some of the meetings on a different evening. If you are staying away because you have lost interest over the years, why did you lose interest? Maybe if the club had a change of direction, you'd regain your interest. If everyone is satisfied with the status quo, it will make my job easier, in fact you don't even need me.

At the last meeting I realized some of my ideas are very controversial and even alien to the way of thinking of some of the club members, but I remind you, each and every one of you had the chance to take the reins and help the organization. If you are staying away from the meetings because of my ideas and management style, please e-mail me, call me on the phone or drop me a line. In fact, anyone e-mail me at naylordej1@juno.com. I would like to hear your ideas.

Don

March and April program notes

The March program was a discussion on spindle turning. Many members talked about the different tools used in spindle turning. The main tool discussed was the Skew chisel. Most people agreed that this is the most difficult tool to learn

SCPA Woodturners Information

President: Don Naylor	717/229-2343
Vice-Pres.: Dave Barkby	717/292-0173
Secretary/newsletter:	
Mike Galloway	717/757-2907
Treasurer: Jerry Kopenhaver	717/432-2753
Librarian: Mike Galloway	717/757-2907
Safety: Lloyd Shelleman	717/677-6458

The South Central Pennsylvania Woodturners is a Chapter of the American Association of Woodturners (AAW). Membership dues are \$20/year. For membership, send a check, payable to "SCPA Woodturners", to the treasurer, Jerry Kopenhaver at 50 Warrington Ways, Wellsville, PA. 17365. AAW membership information can be found at www.woodturner.org.

Treasurers Report

Jerry Kopenhaver

Balance on 4/27/2005:

\$2,617.34

use but when you learn how to use it right it will become your favorite tool. Some suggestions for using the Skew chisel were to keep the tool rest high, always ride the bevel, use the bottom 1/4 of the chisel and always use good wood even when practicing.

The program at the April meeting was a discussion by Don Naylor and Barry Hanna on different types of finishes. Everyone shared their opinions on the finishes they liked best and why some finishes work better the others. Don suggested that as you use a finish that you place marbles in the container to force the air out. This will keep the finish from drying out in the can. SAFTY NOTE: Be sure to soak or place in airtight container any rags that you use to put on a finish. Most finishes are EXTEMLY FLAMMABLE.

Thanks to everyone for sharing your knowledge at the last 2 meetings.

ON THE BUSINESS SIDE

The following is a list of some of the business items that were discussed at the last 2 meetings.

1. **Nametags.** Don suggested that everyone wears a nametag at each meeting. If you do not have a nametag we will make one for you. If you forget to wear your nametag you will be fined \$1.00. Mike Galloway will have the nametags at the next meeting. (Unless he forgets them again)
2. **Membership cards.** A membership card will be made up and given to all members when you pay your dues.
3. **Youth program.** The AAW has been pushing clubs to try and get more youth involved in turning. We discussed getting out to schools and putting on demo's to try and get more young people into turning. Don is going to check with some schools to see if there is any interest.
4. **AAW Professional Outreach Program.** Don talked about this program that is offered free by the AAW. More about this program later in this newsletter.
5. **Seminars.** Don is continuing to look into getting someone in to teach a 1 or 2 day seminar. If you have any suggestions, please let Don know.
6. **Greeter.** We are looking for someone to act as a greeter at our meetings so when we have guest they will feel right at home with us and they can be introduced to the rest of us. Let Don know if you would like to volunteer for this job.
7. **Meeting place.** We talked in some length about meeting at a school or some other facility. This by no way means we are going to abandon Carol on her generous to use Valen shop. We will continue to look into this.

AAW PROFESSIONAL OUTREACH PROGRAM

The Professional Outreach Program addresses the needs of professionals within the woodturning field. These professionals include writers, collectors, teachers, demonstrators, and gallery owners or managers. The goals are to improve services to the professional turner and to promote turned wood as a collectable art form. The heart of this program is a comprehensive database that allows communication with our professional members. Through these communications, information can be gathered and dispersed on a large range of exciting projects that will fulfill the goals stated above. To sign up for this program or for more information go to the AAW website at: www.woodturners.org

FOR SALE

Super Nova Chuck
\$200.00
Nick Aloisio
717-292-0173

SAFTY TIP

By Lloyd Shellemen

Last fall when I did a safety presentation to our turning club, Todd White suggested that because many of us work alone in our shops that we should make sure that we have a telephone available in our shop at all times in order to call for help in the event that we become a victim of an accident

WOODTURNING ON THE WEB

About 3 years ago I was invited to join a woodturning web site called: World of Woodturners. Herman DeVeries from Canada started the site. After being on many newsgroups and other turning sites Herm became disappointed with the information and the quality of those sites. He decided to create his own page using the Myfamily.com web site. Herm wanted to have a site where you could share pictures of your work as well as a place to talk about turning and help others interested in turning. He also wanted a site that he could monitor and keep out a lot of the junk that you get on newsgroups. On the site you will find over 10,000 photos from turners all over the world. You can set-up an album to show your work. You can also ask questions about turnings or make comments on the turnings on the site. You will find professional turners as well as people who are just getting started. There are currently over 500 members on the site. There is a section where you will find articles on turning or how to make different tools and jigs to help you with your turning. One of the many things that I like about the site is that you can ask for your turning to be critiqued when you post a picture of it. I find the information I get back is very friendly and helpful in advancing my turning skills.

This is a **FREE** site, however you need to be invited to join by another member. If you would like to check out the site you can email me (Mike Galloway) at mikega@suscom.net and I will send you an invitation.

Turning Wood with Richard Raffan

(110 minutes in length)

by Glenn Zepp

Turning Wood with Richard Raffan, produced by the Tauton Press, is a companion to Raffan's book of the same title. In fact, as Raffan demonstrates a technique in the video, the upper part of the screen shows the page numbers in the book covering the same topic.

This video covers the very basics of wood turning beginning with tool identification. The author next demonstrates sharpening -- gouges, chisels, scrapers and the parting tool. He rough grinds on a 35-grit wheel and finishes on an 80-grit wheel and he sharpens his tools free hand— doesn't worry too much about multi-faceted bevels.

Raffan explains and demonstrates spindle-turning starting with the importance of proper stance, body support and movement, and tool handling. He shows how to rough down a square blank into a cylinder and then he demonstrates the turning of beads and coves using both the gouge and the chisel. He reinforces these basic techniques by turning a tool handle, a light pull knob, a small scoop, and a box.

The second part of the video covers faceplate turning. Raffan again demonstrates body stance and movement and tool handling techniques appropriate to faceplate turning. Then he applies the techniques in turning a breadboard and a bowl. In the course of his demonstration, Raffan deals with tool chatter, end-grain tare-out, power sanding, turning speed, and the use of jam chucks.

Even without the companion book, this video can be helpful in learning woodturning basics as well as in fine-tuning your technique. I found it quite helpful when I started turning six years ago. I also picked up several tips from re-watching it last winter. Six years of turning experience provided me with a frame of reference for understanding some to the points Raffan shows which I missed as a beginner. Consequently, all but the most experienced turners can learn something from studying this video.

SHOW AND TELL



Cigar Pen Ambrosia Maple
By John Schroll



Walnut and Cherry boxes and Ash Bottle stop
by John Schroll



Elm Burl Bowl



Cherry Burl Bowl



Cherry Burl Bottle

Above 3 turnings by Phil Reed

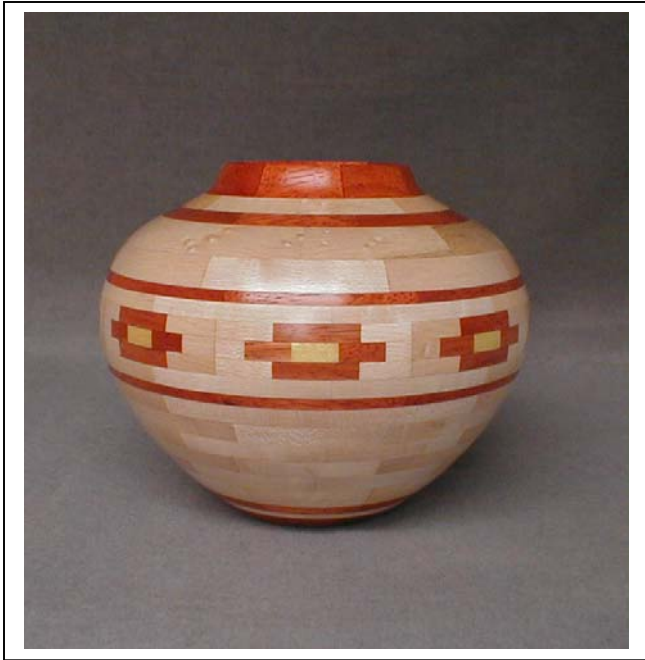


Elmer broke his 4-jaw chuck

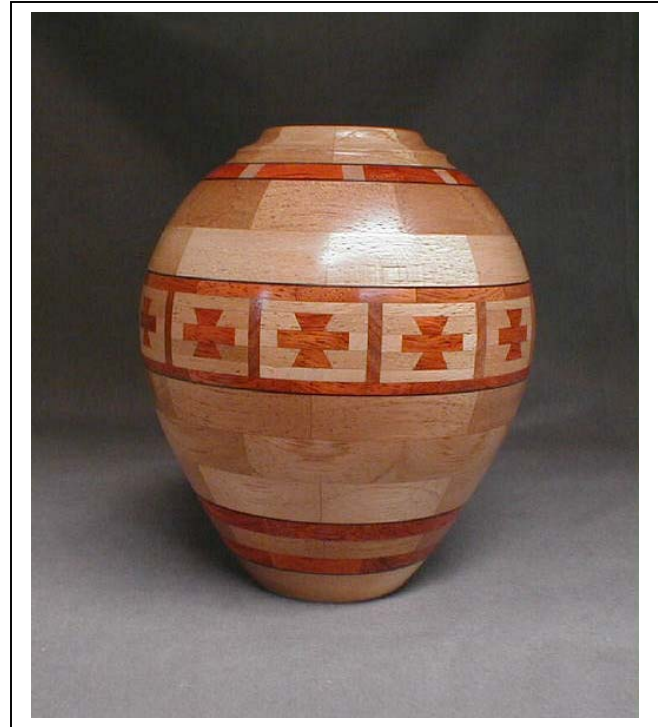


Elmer made a new 4 jaw chuck

SOOO



Padauk – Satinwood - Maple



Padauk – Spanish cedar – Black veneer



Mahogany and Maple

Segmented Vases by Mike Galloway



Ebony bottle stop with captive ring
by Todd White



Angels by Glenn Zepp
Ash and Maple
2 with pickled finish and 1 with Zar stain



Red Spalted Oak bowl
By Dean Swagert



Walnut Quilt Rack by Tom Elledge



Lace and Multi-colored wood
Deer calls
By Ray Kohr



Thickness sander built by Mike and Charlie
Galloway



Stool by Elmer Absher
The legs were turned using
the jig that Elmer made with a
router for his lathe (see photos
in last newsletter).