

The South Central Penn Turner

Newsletter of the South Central Pennsylvania Woodturners, May-June 2003



Carved maple burl hollow form by, Jan Barkby (2½”h x 4”w) and open segmented lidded box of maple, mahogany, and blood wood, by Dean Swagert (5”h x 3½”w).

Future Meetings:

May 6, 2003

Time: 6:00 p.m.

Place: Dave and Jan Barkby’s shop, 2695 Sky Top Trail, Dover PA

Directions: From York take route 74 North through Dover. Proceed about 3 miles beyond the light in Dover (Exxon on corner) to just over the crest of a hill, then left onto Sky Top Trail (Don’t be fooled by Sky Top Trail to the right before you come to Sky Top Trail to the left). Go 1 mile to the Barkby house on the right—brown brick with a split rail fence around the front and side yards. Parking is limited so carpool if you can. Call if you need further directions (717) 292-0173.

Program: Business meeting, Show & Tell, and program on hollow form turning by Dave Barkby.

June 3, 2003

Time: 6:00 p.m.

Place: Carol Frye’s shop, 535 Conewago Creek Road, Manchester, PA.

Directions: From York, take exit 28 (old exit 12) off I-83. Go east on Susquehanna Trail (about ¼ mile) to a right onto Conewago Creek Rd. Go approximately 0.8 mile to 535 Conewago Creek Rd. on your right (Look for red barn next to the road)

Program: Business meeting, Show & Tell, and program on woodturning techniques. There will be several turning stations at which experienced turners will demonstrate various techniques and offer suggestions to members who want to try their hand at turning.

About Our Members

The hollow form with carved oak leaves by **Jan Barkby** on the front cover won 1st place in the intermediate level woodturning class and the Best of Show award (intermediate level) at the Lancaster Wood Carvers Show and Sale held at Millersville State University, March 22 and 23. Congratulations Jan!

Tell others about your activities by sending the information to Glenn Zepp, 1160 Old Harrisburg Road, Gettysburg, PA 17325, (717-337-9571) or email him at zeppga@blazenet.net.

New Member

John Brady, 127 E. Chestnut St.,
Hanover, PA 17331 e-mail
jeb@jebwebsite.com

Ray Kohr, 2140 Fishing Creek Rd.,
Wrightsville, PA 17368; (717) 252-
3035; e-mail doduckin@juno.com

John Schroll, 147 Sylvan Drive, York,
PA 17402; (717) 755-6869; e-mail
dagman@suscom.net

Welcome to our club John, Ray, and
John!

March Notes

Todd White hosted the March meeting at the Fisher Millworks in East Petersburg. Fisher Millworks specializes in architectural millwork, cabinetry, and furniture making for homes and businesses. Todd handles the specialized turning as well as other aspects of the business. For large orders of turned components, the business contracts the turning out to shops that mass produce reproducible items. But, for one of a kind turnings, Todd turns them in the Company's own shop.

Todd said he prefers furniture building to the cabinetry aspect of their work. He showed two

SCPA Woodturners Information

President:

Vice-Pres.: Dave Barkby 717/292-0173

Secretary/newsletter:

Glenn Zepp 717/337-9571

Treasurer: Jerry Kopenhaver 717/432-2753

Librarian: Mike Galloway 717/757-2907

The South Central Pennsylvania Woodturners is a Chapter of the American Association of Woodturners (AAW). Membership dues are \$20 per calendar year (\$10 for a partial year if joining after June 30). For membership, send a check, payable to "SCPA Woodturners", to the treasurer, Jerry Kopenhaver at 50 Warrington Ways, Wellsville, PA. 17365. AAW membership information can be found at www.woodturner.org.

Treasurers Report (Apr. 13, 2003)

Jerry Kopenhaver

Balance \$2085.44

stools he had turned (see pictures), and gave a number of pointers for preventing tenoned joints from coming loose. Thanks Todd for an interesting program.

April Notes

Guest turner, Bill Smith, captivated our attention at the April meeting with a demonstration of open segmented turning—see some examples of his work in the April Gallery. Starting with the geometry of design, Bill demonstrated the cutting of segments, the assembly and gluing of pieces to make the turning blank, the turning of the blank, sanding and finishing. At each step along the way he offered hints on how to avoid potential problems and related stories about his experiences with open segmented turning.

For those of you who missed the meeting and would like to know more about open segmented turning, Bill has authored a book, *Segmented Wood Turning*, published by the Schiffer Publishing Company, Atglen, PA. His book retails for about \$15. Bill also holds three-person, one-day workshops at his home. The cost is \$100 per person. Participants come away

from the workshop with one completed open segmented turning.

Upcoming Event of Interest

2003 AAW Symposium—Now is the time to plan for the 17th Annual National AAW Symposium in Pasadena, California, June 27-29, 2003.

Featured demonstrators include Vic Wood (Australia), Eli Abuhatzira (Israel), Ciaran Forbes (Ireland), Johannes Rieber (Norway), Stephen Hogbin (Canada), Luke Mann (Vermont), Craig Nutt (Tennessee), and David Ellsworth (Pennsylvania). See the Spring 2003 AAW Journal for a list of additional demonstrators.

You may bring up to three of your own turned creations to share with others in the Instant Gallery. The Gallery is open to the public as well as to symposium participants.

Spouse/family activities for "non-turners", include daily chartered tours to points of interest in the Los Angeles area.

For more details see the spring issue of the American Woodturner.

Ohio Valley Woodturners Guild Mini-Symposium--The Ohio Valley Woodturners' Guild is sponsoring a Mini-Symposium October 17-19, 2003. The location, just minutes from the Cincinnati airport, is served by four interstate highways.

Five featured turners--Richard Raffan, Michael Lee, Bonnie Klein, Al Stirt, and Michael Mahoney-- will demonstrate for ten hours each during the three days.

The cost for the three days, \$235, includes 3 breakfasts, 3 lunches, Friday evening dinner, and the Saturday Banquet. Rooms at the facility cost \$55 a night. Off campus motels are available for a higher fee. For additional information contact Joe Keeler at jgklr2732@aol.com.

For Your Information

By Todd White

The following announcement in the April issue of WOODSHOP NEWS may interest you if you are a bowl turner. Inclusion in the proposed book would provide a way to advertise yourself and your work.

500 Wooden Bowls

Bobby Phillips
Spalted maple;
turquoise rim



CALL FOR ENTRIES

Send high-quality color slides or transparencies of your work for possible inclusion in an exciting full-color book showcasing the best work in the field. To be published by Lark Books in 2004. Original works considered that range from traditional, functional bowls to conceptual interpretations. No entry fee. Accepted artists receive full credit and complimentary copy.

Postmark deadline: JULY 10, 2003

For guidelines send SASE to:
500 Bowls, Lark Books, 67 Broadway,
Asheville, NC 28801

Access forms on our website:
[http://www.larkbooks.com/submissions/
ArtistsEntryForms.asp](http://www.larkbooks.com/submissions/ArtistsEntryForms.asp)
E-mail: 500bowls@larkbooks.com



WOODSHOP NEWS April 2003

VIDEO LIST

By Mike Galloway

The following videotapes are available for rent from the club library at a cost of \$2.00 per tape per month. I have viewed a number of them and can recommend them highly. I think the AAW Symposium videotapes are especially useful in helping to judge the quality of your own turnings.

Six of the library's tapes are missing. If you have any of the missing tapes, please return them so that other members can benefit from their use.

If you have any of your own videotapes that you would like to donate to the library, bring them to the next meeting or mail them to me at 720 S. Russell St., York, PA 17402.

	Length	Tape #
Turning Pens and Small Projects Carba_Tech Mini Lathe	40 min	#7
John Jordan Bowl Turning	120 min	#2
Richard Raffan Turning Projects	90 min	#15
Richard Raffan Turning Boxes	55 min	#1
Richard Raffan Turning Wood	110 min	#24
Turning Unusual Materials Bonnie Klien	100 min	#23
Fundamentals of Sharpening		#18
Turning Projects from Scrap with Robert Rosand	90 min	#17
An Introduction to Bowl Turning with Rus Hurt	90 min	#11
Turned Bowl Fundamentals Phil Pratt		#22
Making a Hook Tool		#21
Skill Building Projects with Mark St. Leger	90 min	#20
Techniques from the 1995 AAW Symposium	112 min.	#10
Techniques of the 1996 AAW Symposium		#6
Scenes from the 1994 AAW Symposium	60 min	#13
Instant Gallery of the 1996 AAW Symposium		#5
Instant Gallery of the 1995 AAW Symposium		#16

Missing Tapes

John Jordan Hollow Turning
Ray Keys Turned Boxes
David Ellsworth Tools for Hollow Turning
David Ellsworth Tips for Turners
1997 AAW Introduction to Bowl Turning
Capital Area Turners Hollow Turning and Boxes

ARE YOU TURNING TOO FAST?

Larry Stevenson

My decision to write this article came after viewing a videotape from our library. For those of you whom would like to review for yourself it is V41—2001 AAW Symposium, Techniques Video, volume one. In particular this article was a result of a discussion by Dale Nish on Natural Edge Bowls. He was discussing that many turners are turning, in his opinion, at too fast a speed. He goes on to mention that he has been called as a witness at trials involving deaths resulting from injuries related to “turning too fast”. He mentioned a particular case where a friend of his who was turning a large, 24” Lazy Susan, received an extremely bad injury from turning too fast and may have been better off if he hadn’t survived. His injury left him dependent on having medical devices attached to him indefinitely. The long and short of it is that Dale Nish recommends that you use the following formula to determine a safe turning speed.

$$\text{DIAMETER} * \text{RPM} = 6000-9000$$

The numbers 6000-9000 are just numbers that are used to determine a range of safe turning speeds. I thought I’d do a little math and found out that I have definitely been guilty of exceeding this limit. So here is a table of speeds using the preceding formula.

Diameter Inches	Speed range RPM	Diameter Inches	Speed range RPM
1	6000 – 9000	13	462 - 692
2	3000 – 4500	14	429 - 643
3	2000 – 3000	15	400 - 600
4	1500 – 2250	16	375 - 563
5	1200 – 1800	17	353 – 529
6	1000- -1500	18	333 - 500
7	857 – 1286	19	316 - 474
8	750 – 1125	20	300 - 450
9	667 – 1000	21	286 - 429
10	600 – 900	22	273 - 409
11	545 – 818	23	261-391
12	500 – 750	24	250 - 375

Now I know that most of the lathes out there either do not have a digital RPM readout or do not have all this range of speeds, however this does provide a guideline for “Safe Turning Speeds”. Next time I have a large platter on the lathe I will probably exercise on the side of caution as I really enjoy woodturning and would hate to have a delamination or breakage send me to the hospital. Obviously this doesn’t negate the need for proper eye and face protection, it is just meant as another guideline for safety.

Reprinted with permission from the Greater Vancouver Woodturners Guild Newsletter. Volume 3, Issue 9. June 2002



(Left) Maple mallet turned from a bowling pin, by Lee Bradenbaugh (8" h x 3½ w)



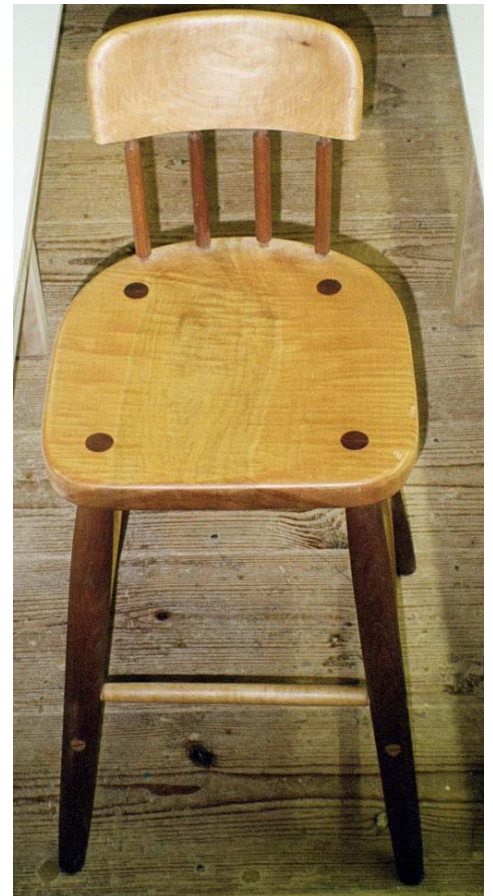
(Right) Cabinet doorknobs, by Lee Bradenbaugh (1½" h x 1½" w)



(Right) "Magic tops" turned by Charles "Zeke" Miller. Give them a good spin and they turn themselves upside down and spin on their handles.



(Left and Right) Maple and Cherry stools, by Todd White



(Left) Yew and cherry burl stress relievers, by Dale McCoy. Hold them in your hands when in need of stress relief.



(Right) Jacobs chuck and 5/8" tap used to hold blank while turning powder horns. Dale McCoy

(Left) Powder horn ends, by Dale McCoy. Cow horn and various woods. Heights range from 2½" to 4".



(Right) Glue chuck for holding small objects. Dale McCoy.

(Left) Oops! I got this one too thin. Dale McCoy

Show & Tell—April, 2003



(Left) Open-segmented vessel of maple mahogany and blood wood, by Dean Swagert (6" h x 4" w)



(Right) Cherry and Mahogney wine glass, by Dennis Hoffman (3"w x 19"h)



(Right) Maple burl hollow form with carved and painted leaves and fruit, by Dave Barkby

(Left) Cherry vase, by Dennis Hoffman (3½"w x 4"h)

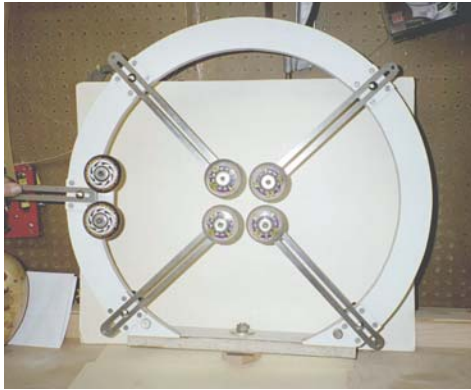




(Right) Maple sketchbook cover, by David Smith (8½”h x 11”w)

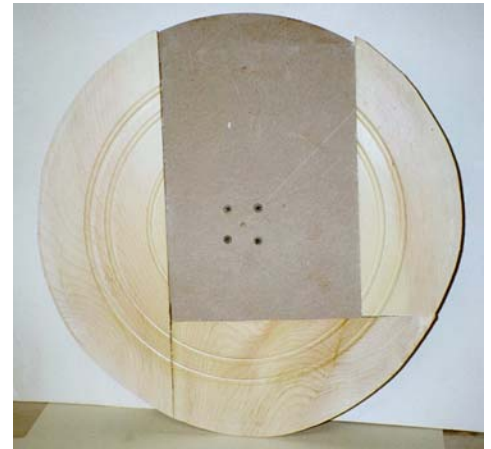


(Left) Carian (Counter top material) bowl, by Phil Reed (2”h x 6”w)



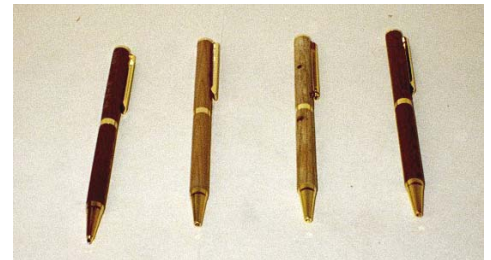
(Left) “Steady rest,” used to stabilize long pieces while turning, by Phil Reed

(Right) Jig used to turn book cover, by David Smith (18” diameter)



(Left) Walnut bowls, by Todd White (2”h x 4”w)

(Right) Wooden pens turned by John Stewart (lacewood, wormy chestnut, and red cedar)



(Left) Maple bowl, by Lonny Seitz (6”w x 7”h)

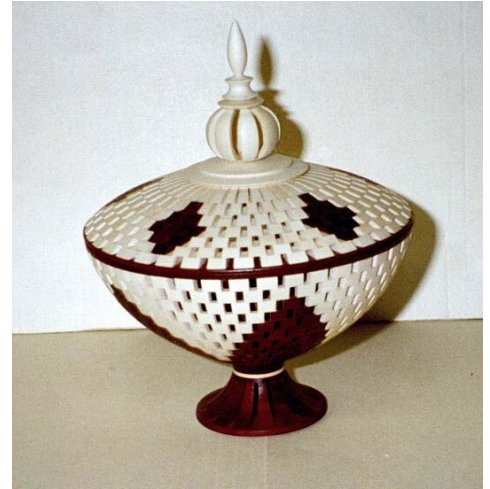
(Right) Mulberry bowl, by Lonny Seitz (3½”h x 10”w)





(Left) Cherry vase/flower holder, by Lonny Seitz (4”h x 6”w)

(Right) Open segmented lidded bowl, by guest turner Bill Smith (5”w x 7”h)



(Left) Open segmented hollow form, by guest turner Bill Smith (6”w x 13”h)

(Right) Open segmented bowl, by guest turner Bill Smith (6½” diameter)



(Right) Walnut bowl with open segmented rim, by guest turner Bill Smith (3”h x 8”w)



(Left) Collection of open segmented turnings, by guest turner Bill Smith